

E-mail: [imcms.paper@gmail.com](mailto:imcms.paper@gmail.com)

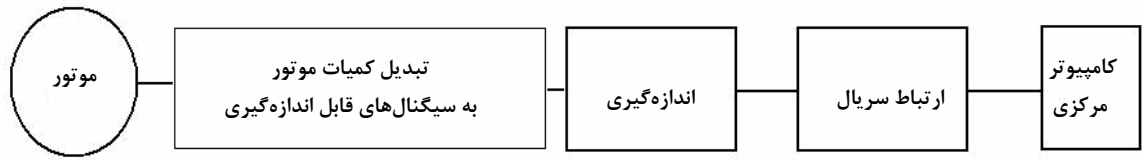
MATLAB

(Graphical User Interface)

[ ]

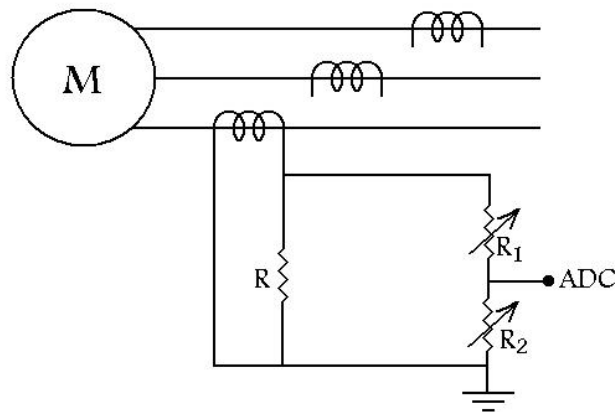
( )  
MBA



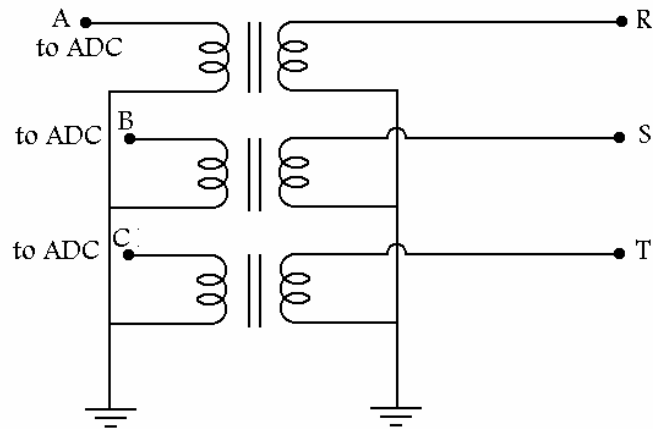
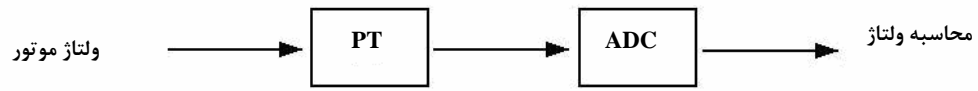


R ( )

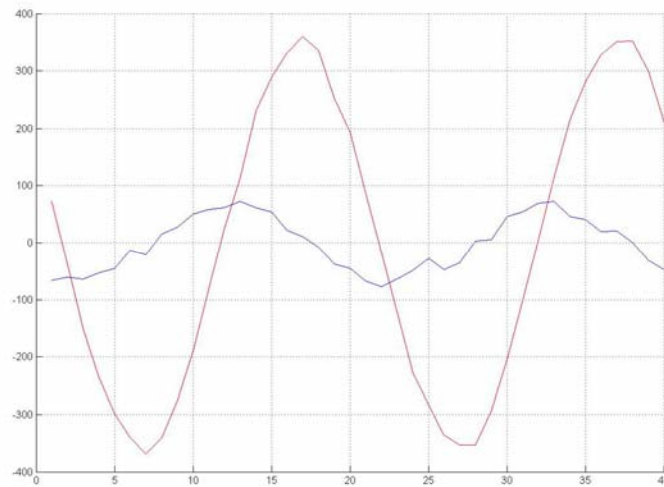
R2 R1



YY



MATLAB



C++

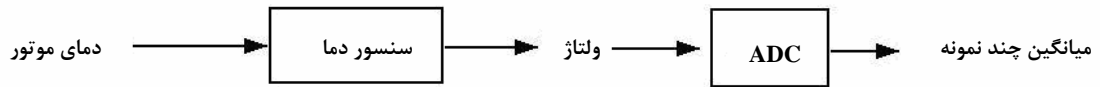
codevision

CAVR

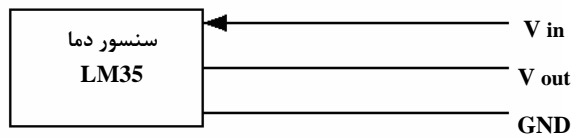
LM35

$0 + 10 \text{ mV}/^{\circ}\text{C}$

DC



( )	
	A
	B
	F
	H



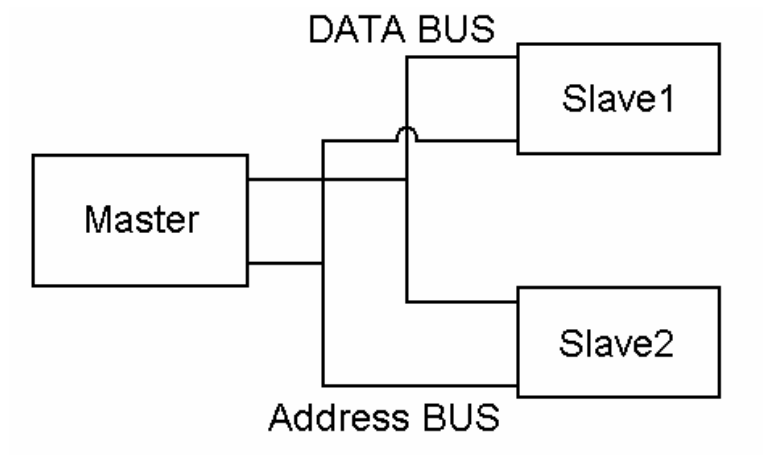
(clock pulse)

(multiplexer)

+

δ δ

[ ]



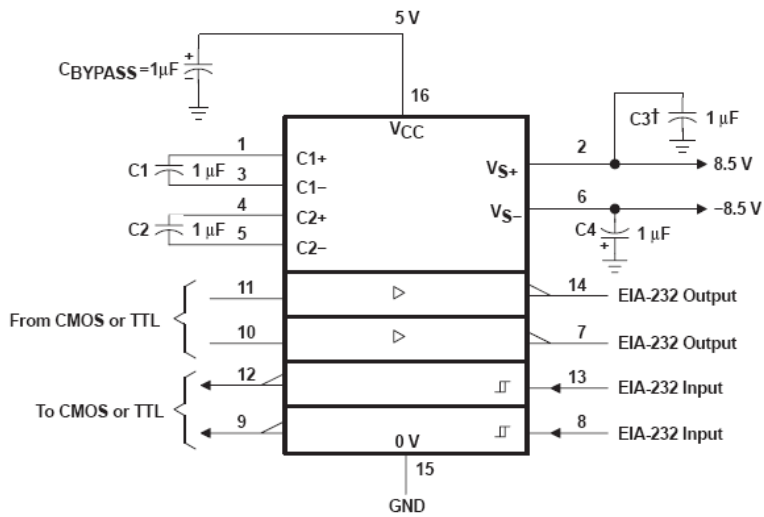
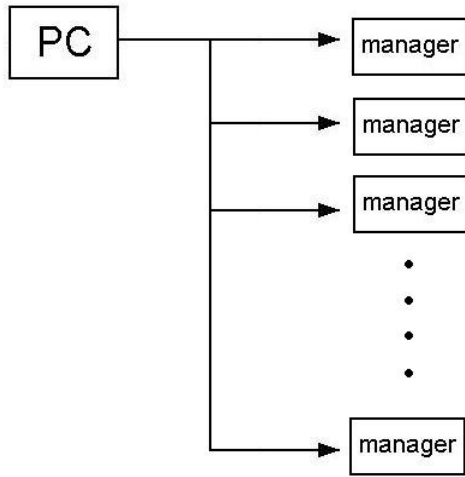
( )

RS232 TTL )

(HIN232

[ ] [ ]

HIN232



**HIN232**

bps

RS232

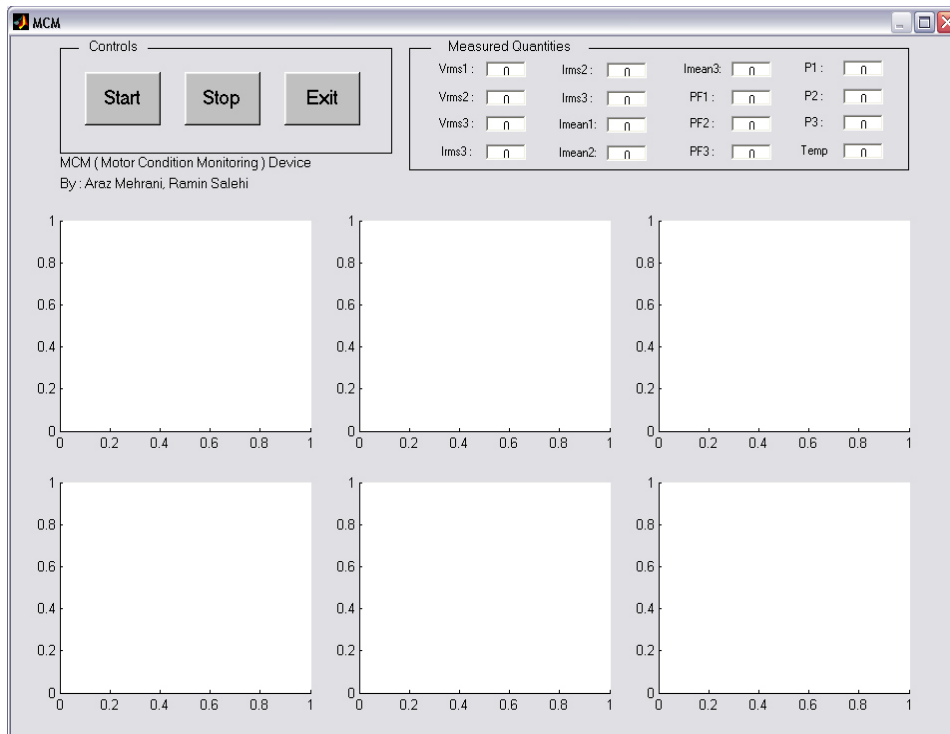
**RS232**

( )	

(bit per second)

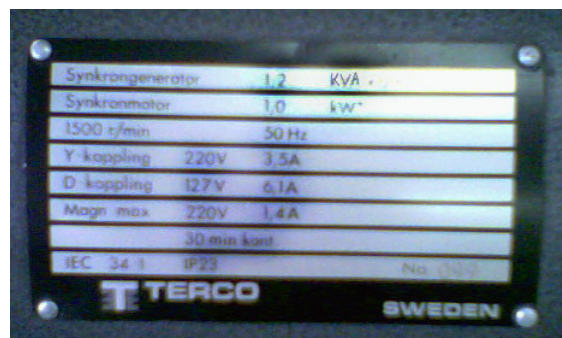
(Graphical User Interface)

MATLAB

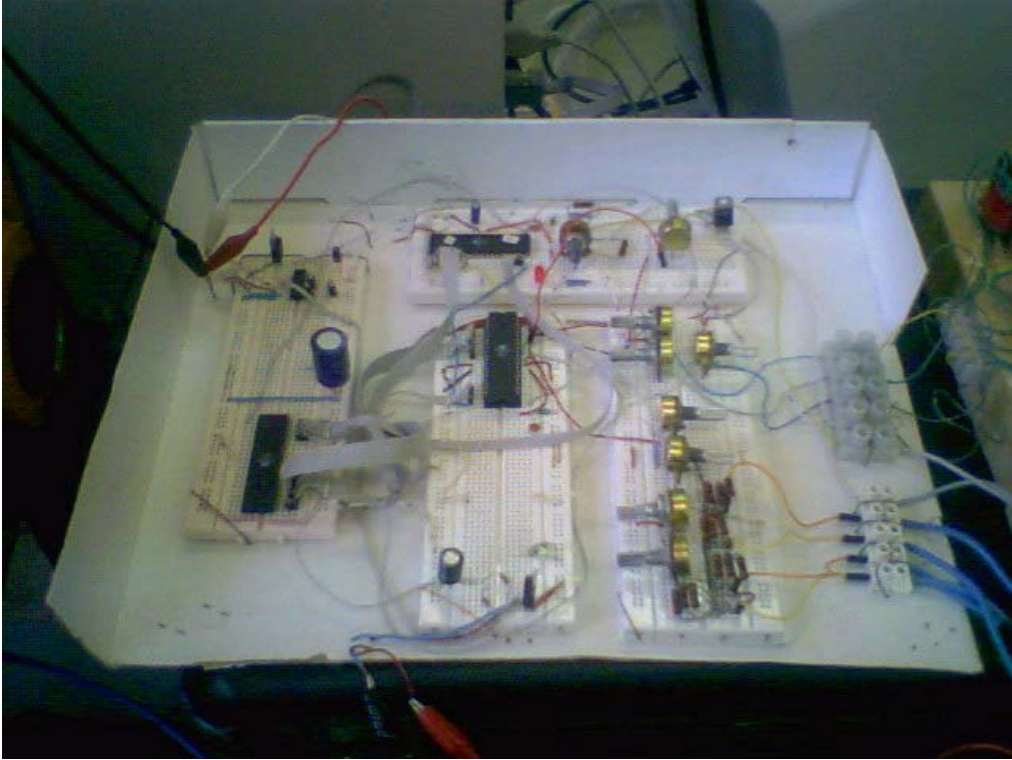


GUI

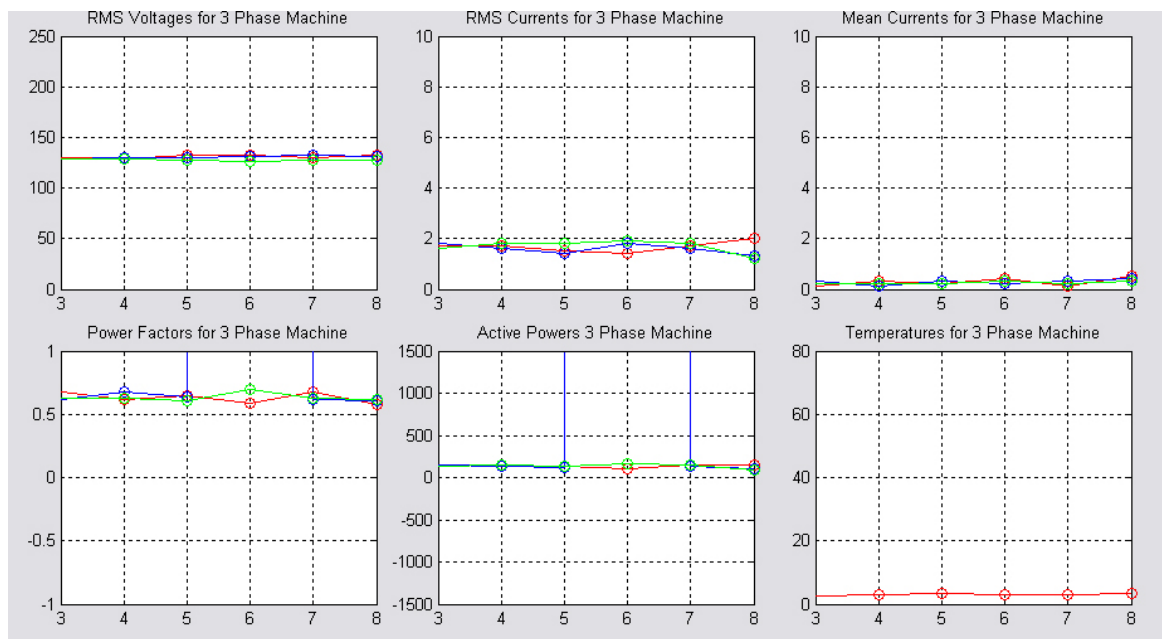
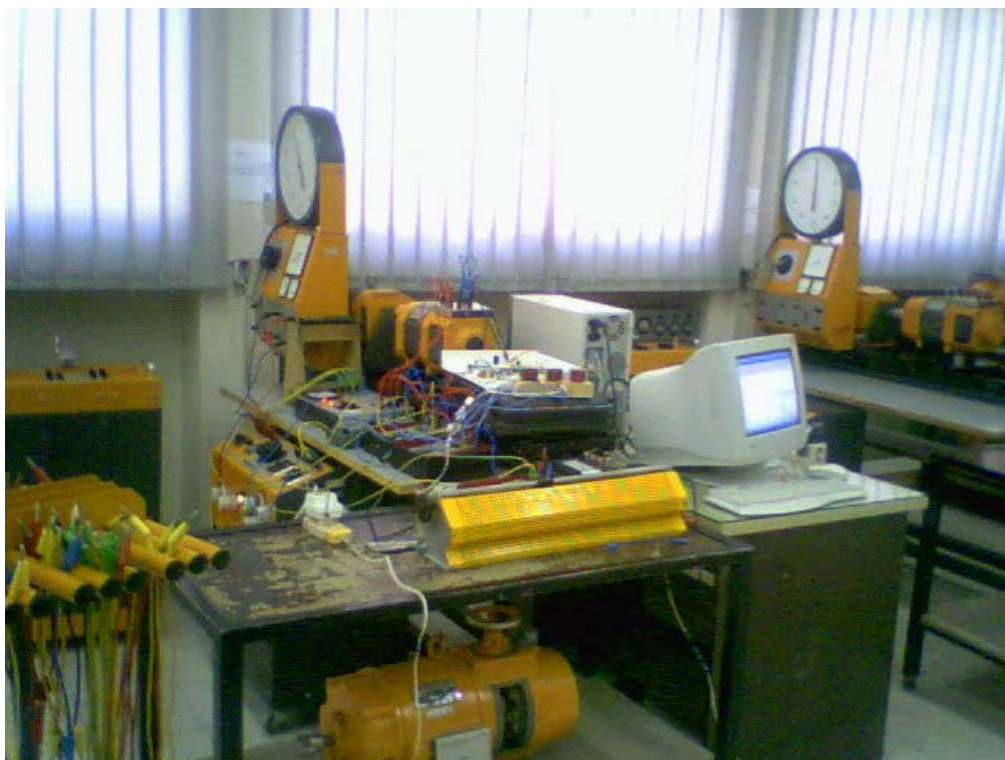
, kVA

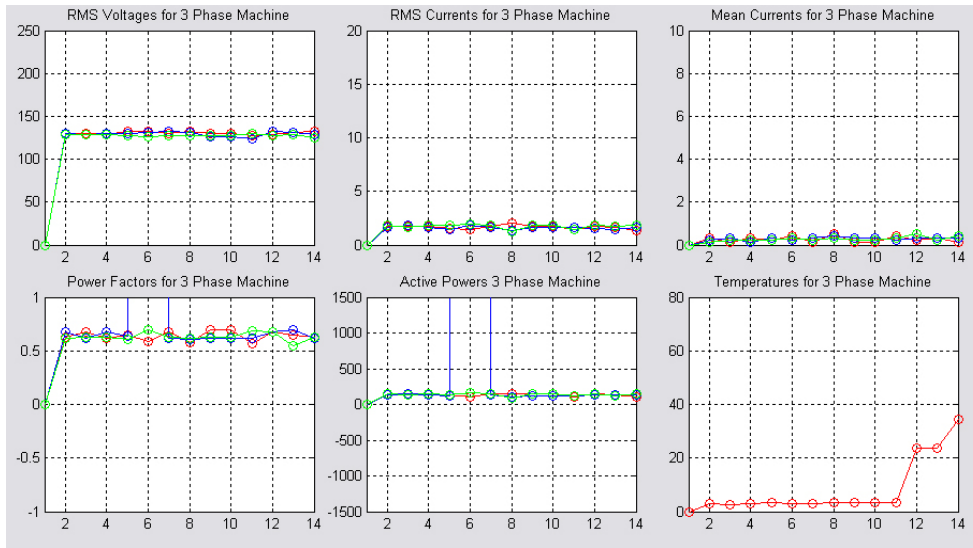






( )





6

Vrms1	Irms1	PF1	V'rms1	I'rms1	PF'1
/	/	/		/	/
/	/	/	/	/	/
/	/	/	/	/	/
/	/	/	/	/	/
/	/	/	/	/	/

۵

۵

1. Dongfeng Shi and Nabil N. Gindy, "Industrial Applications of Online Machining Process Monitoring System", Transactions on mechatronics, Vol. 12, No. 5, October 2007.
2. Ramazan Bayindir, Ibrahim Sefa, Ilhami Colak and Askin Bektas, "Fault Detection and Protection of Induction Motors Using Sensors", IEEE Transactions on energy conversion, Vol.23, No. 3, September 2008.
3. "ATmega 16" Datasheet
4. "AD574A" Datasheet
5. "Max232" Datasheet