

# EGR

*E-mail:djavaresh@tabrizu.ac.ir*

SIMPLE EGR NO<sub>x</sub>  
( Shell And Tube)

- - - EGR :

(No<sub>x</sub>)  
No<sub>2</sub> No No<sub>x</sub>  
No<sub>2</sub> Co No No<sub>2</sub>  
No<sub>x</sub>

(Particulate Matter) PM NO<sub>x</sub>  
(PM) (NO<sub>x</sub>)  
PM NOX ( )

NO<sub>x</sub>

( )

NO<sub>x</sub> [ ]

[ ]

NO<sub>x</sub>

(EGR)

NO<sub>x</sub>

(EGR)

EGR

O<sub>2</sub> N<sub>2</sub>

NO<sub>x</sub>

EGR

[ ]

EGR

NO<sub>x</sub>

EGR

NO<sub>x</sub>

NO<sub>x</sub>

(Shell - And - Tube)

EGR

mm

/ mm

EGR

( )

(Compact)

[ ]

(RSM)

SIMPLE

%

°C

-۳

( )

۲

mm

mm (Jacket)

( )

mm / mm

mm

mm

[ ]

"

l g/s l °C

( )

°C

[ ]

( )

g/s

g/s

g/s

"

( )

(Darcy)

%

$$\Delta p = f \times \frac{l}{D} \times \rho \frac{v^2}{2}$$

( )

v

$\rho$

L D

f

I

III

II

III

I

II

II

( )

%

I, II

III

( )

mm

mm

%

°C

°C

g/s

mm

mm

k

k

( )

II

III

II

III

(I )

)

( )

.(

II

%

II

EGR

(II )

( % ) III

II

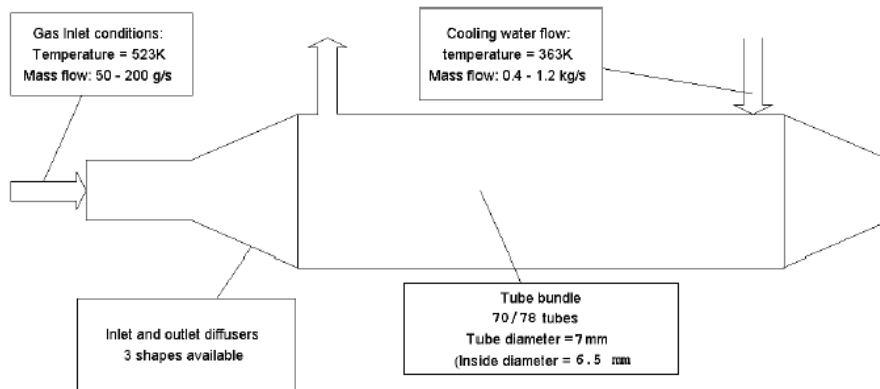
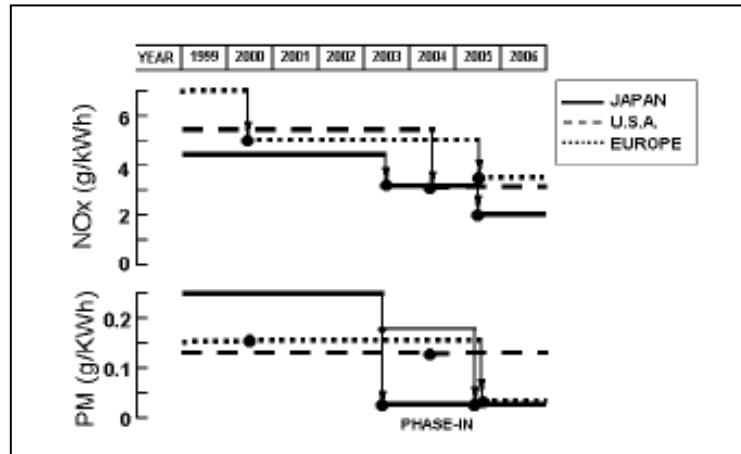
( ) I

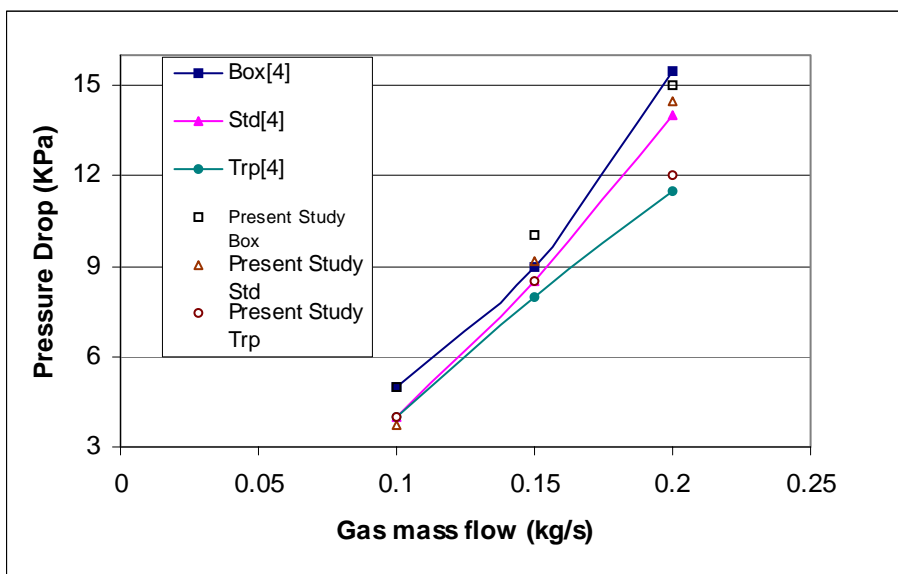
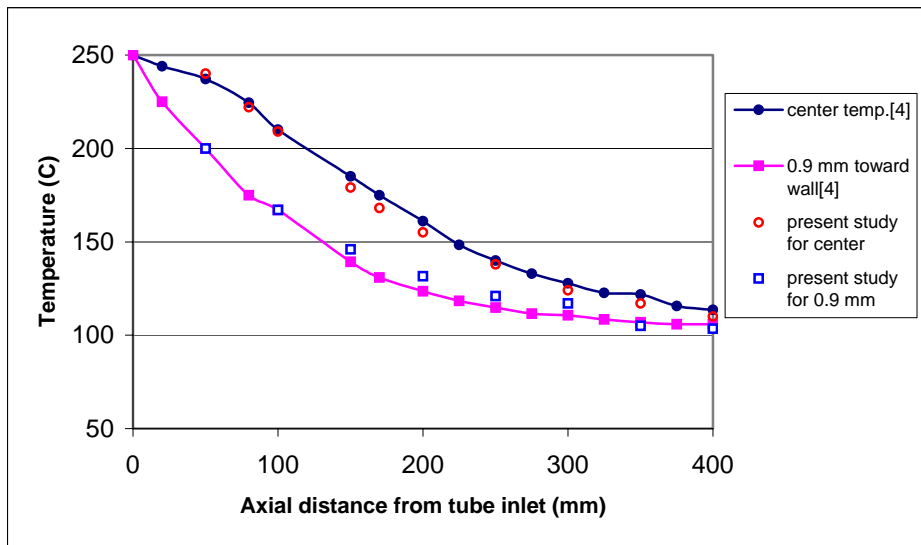
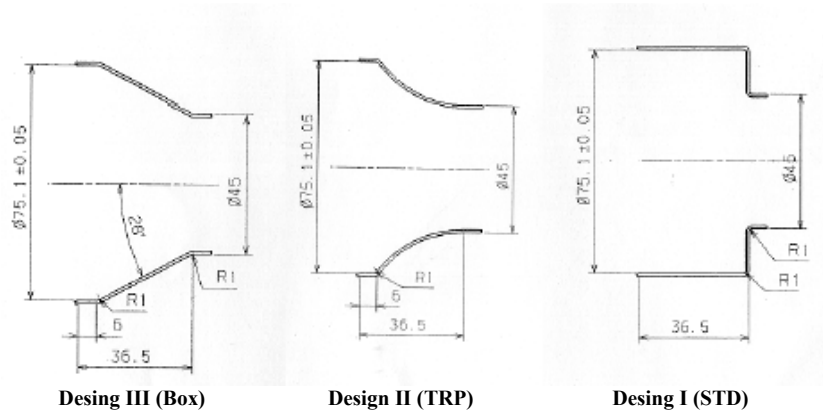
II,I

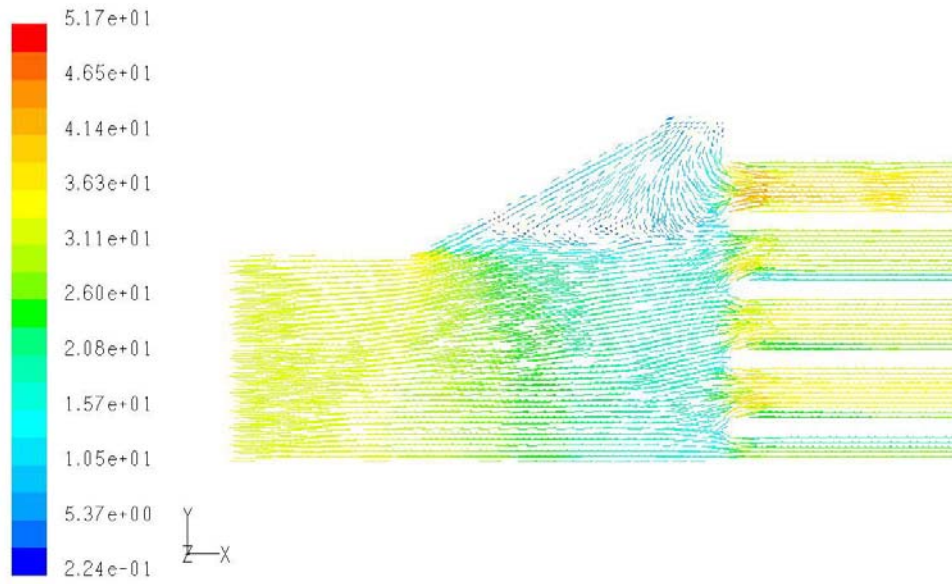
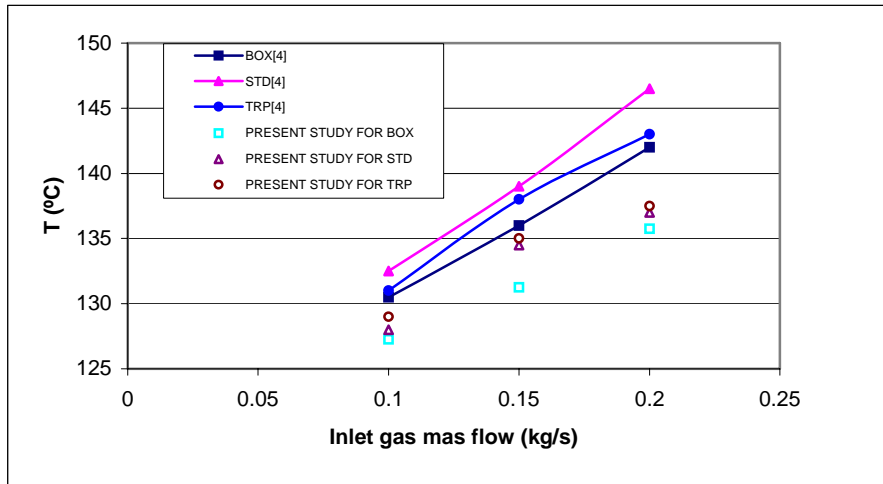
III

EGR

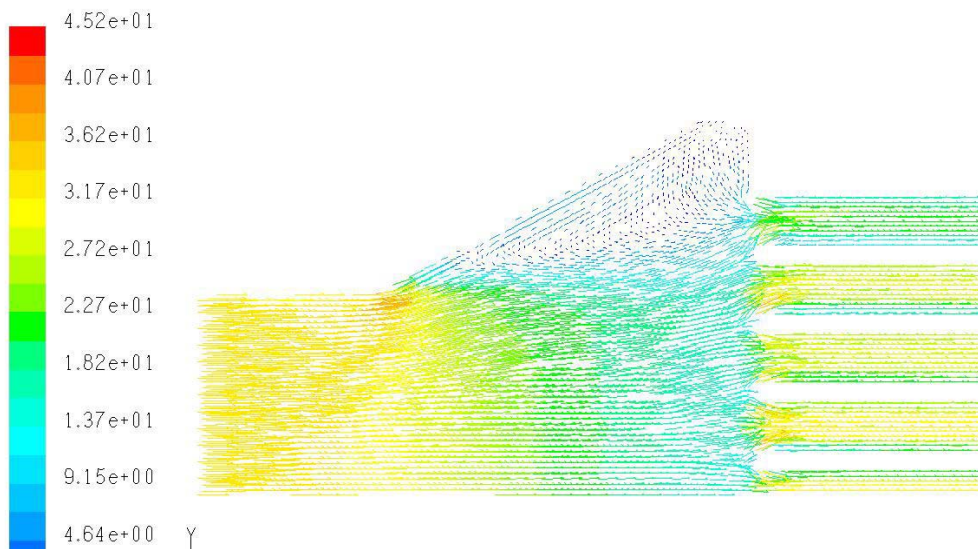
1. J.B. Heywood, "Internal Combustion Engine Fundamentals", MC Graw Hill
2. Kohketsu, Mori, Sakai, Hakozaiki, "EGR Technologies for a turbocharged and intercooled heavy – duty diesel enging", SAE 970340.
3. D.T. Montgomery and R.D. Reitz, "Six –Mode Cycle Evaluation of the Effect of EGR and Multiple Injections on Particulate and NOx Emissions from a Di Diesel Engine", SAE paper 960316
4. A. Murty Kanury, "Introduction To combustion Phenomena, 1060.
5. Lucien Charnay, Hans – Erik Angstrom and Lena Anderson "CFD Optimization EGR Cooler for Heavy –Duty Diesel Engines" SAE paper 2001-01-1755
5. A. Hanifi, P.H. Alfredsson, A.V. Johansson and D.S Henningson. Transition , turbulence and combustion modeling , Kluwer Academic Publisher, ERCOFTAC Series.
6. P.A. Libby , Introduction to Turbulence" Combustion, An international Series, Norman Chigier Editor





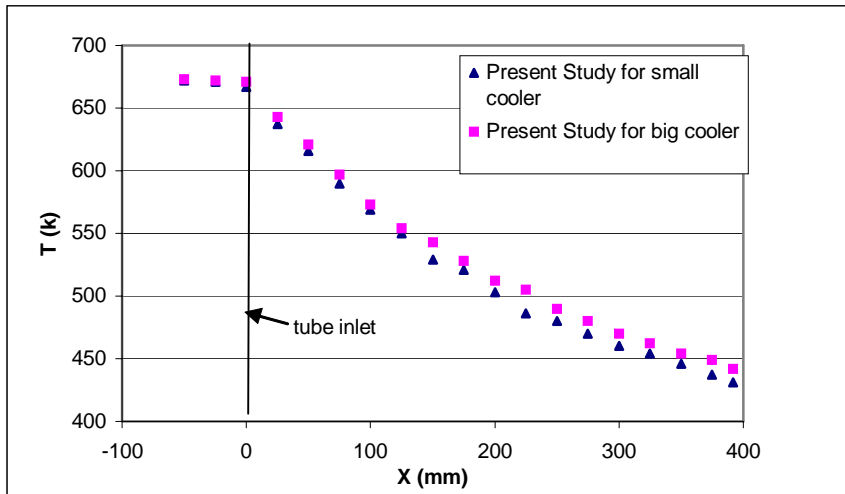


mm

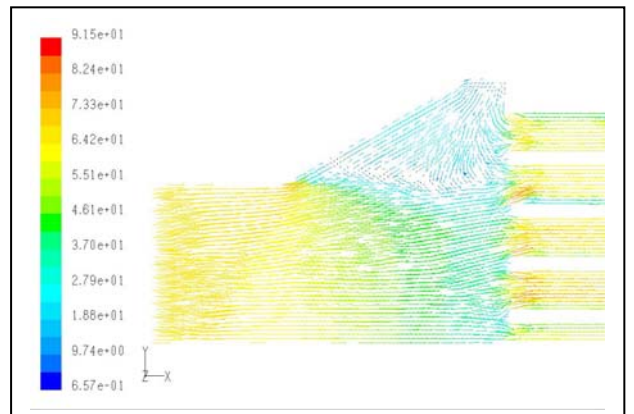
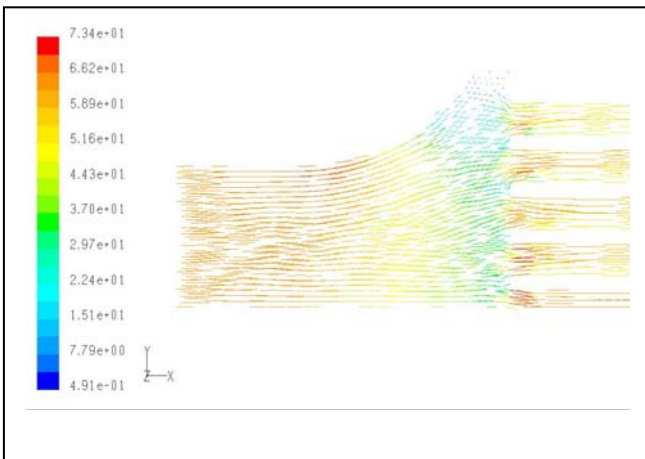




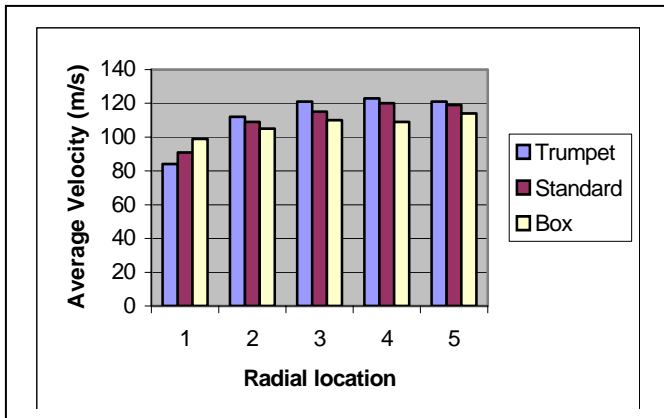
mm



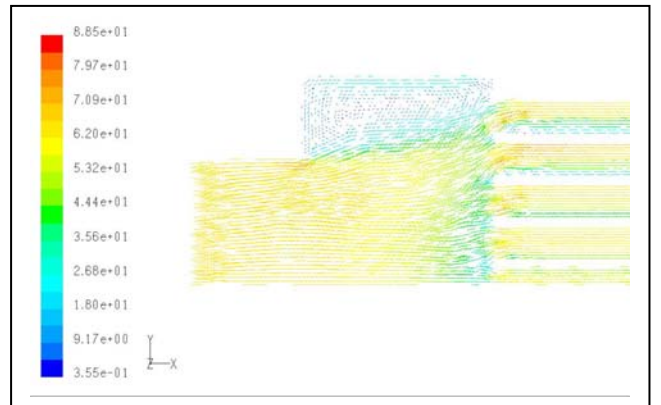
mm mm



II



I



II