

N,N'-Dicyclohexyl-*N''*-(4-nitrobenzoyl)-phosphoric triamide

Fahimeh Sabbaghi,^{a*} Mehrdad Pourayoubi,^b Maryam Toghraee^b and Vladimir Divjakovic^c

^aDepartment of Chemistry, Islamic Azad University–Zanjan Branch, PO Box 49195-467, Zanjan, Iran, ^bDepartment of Chemistry, Ferdowsi University of Mashhad, Mashhad 91779, Iran, and ^cDepartment of Physics, Faculty of Sciences, University of Novi Sad, Trg D. Obradovica 3, 21000 Novi Sad, Serbia
Correspondence e-mail: fahimeh_sabbaghi@yahoo.com

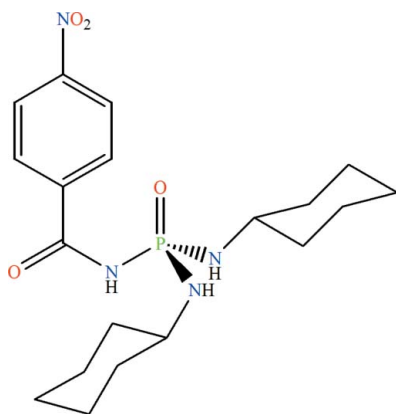
Received 4 January 2010; accepted 7 January 2010

Key indicators: single-crystal X-ray study; *T* = 295 K; mean $\sigma(\text{C}-\text{C})$ = 0.004 Å; *R* factor = 0.040; *wR* factor = 0.115; data-to-parameter ratio = 14.6.

The P atom in the title compound, C₁₉H₂₉N₄O₄P, exhibits a tetrahedral coordination and the phosphoryl and carbonyl groups are *anti* to each other. Adjacent molecules are linked by N—H...O hydrogen bonds to form a layer motif.

Related literature

For a phosphate compound containing the C(O)NHP(O) unit, see: Pourayoubi & Sabbaghi (2007). For phosphoric triamide, see: Pourayoubi & Sabbaghi (2009).



Experimental

Crystal data

C₁₉H₂₉N₄O₄P

M_r = 408.43

Triclinic, *P* $\bar{1}$
a = 10.4091 (7) Å
b = 10.8527 (9) Å
c = 11.1116 (10) Å
 α = 99.764 (7)°
 β = 110.881 (7)°
 γ = 108.158 (7)°

V = 1057.25 (18) Å³
Z = 2
Mo *K*α radiation
 μ = 0.16 mm⁻¹
T = 295 K
0.52 × 0.31 × 0.29 mm

Data collection

Oxford Diffraction Xcalibur diffractometer with a Sapphire3 (Gemini Mo) detector
6746 measured reflections

3713 independent reflections
2915 reflections with *I* > 2σ(*I*)
*R*_{int} = 0.016

Refinement

$R[F^2 > 2\sigma(F^2)]$ = 0.040
 $wR(F^2)$ = 0.115
S = 1.11
3713 reflections

254 parameters
H-atom parameters constrained
 $\Delta\rho_{\text{max}}$ = 0.38 e Å⁻³
 $\Delta\rho_{\text{min}}$ = -0.37 e Å⁻³

Table 1

Hydrogen-bond geometry (Å, °).

<i>D</i> —H... <i>A</i>	<i>D</i> —H	H... <i>A</i>	<i>D</i> ... <i>A</i>	<i>D</i> —H... <i>A</i>
N1—H1...O4 ⁱ	0.86	2.54	3.305 (2)	148
N2—H2...O2 ⁱⁱ	0.86	2.25	3.0578 (18)	156
N3—H3...O1 ⁱⁱⁱ	0.86	1.97	2.8229 (18)	170

Symmetry codes: (i) $-x + 1, -y + 1, -z - 1$; (ii) $-x + 2, -y + 1, -z$; (iii) $-x + 1, -y + 1, -z$.

Data collection: *CrysAlis PRO* (Oxford Diffraction, 2009); cell refinement: *CrysAlis PRO*; data reduction: *CrysAlis PRO*; program(s) used to solve structure: *SIR92* (Altomare *et al.*, 1993); program(s) used to refine structure: *SHELXL97* (Sheldrick, 2008); molecular graphics: *Mercury* (Macrae *et al.*, 2008); software used to prepare material for publication: *SHELXL97*.

Support of this investigation by Islamic Azad University–Zanjan Branch is gratefully acknowledged.

Supplementary data and figures for this paper are available from the IUCr electronic archives (Reference: NG2716).

References

- Altomare, A., Casciarano, G., Giacovazzo, C. & Guagliardi, A. (1993). *J. Appl. Cryst.* **26**, 343–350.
Macrae, C. F., Bruno, I. J., Chisholm, J. A., Edgington, P. R., McCabe, P., Pidcock, E., Rodriguez-Monge, L., Taylor, R., van de Streek, J. & Wood, P. A. (2008). *J. Appl. Cryst.* **41**, 466–470.
Oxford Diffraction (2009). *CrysAlis PRO*. Oxford Diffraction Ltd, Yarnton, Oxfordshire, England.
Pourayoubi, M. & Sabbaghi, F. (2007). *Acta Cryst.* **E63**, o4366.
Pourayoubi, M. & Sabbaghi, F. (2009). *J. Chem. Crystallogr.* **39**, 874–880.
Sheldrick, G. M. (2008). *Acta Cryst.* **A64**, 112–122.

supplementary materials

Acta Cryst. (2010). E66, o344 [doi:10.1107/S1600536810000851]

N,N'-Dicyclohexyl-*N''*-(4-nitrobenzoyl)phosphoric triamide

F. Sabbaghi, M. Pourayoubi, M. Toghraee and V. Divjakovic

Comment

Following our previous works about phosphorus compounds containing C(O)NHP(O) moiety such as P(O)[NHC(O)C₆H₄(4-NO₂)][N(CH(CH₃)₂)(CH₂C₆H₅)]₂ (Pourayoubi & Sabbaghi, 2009) and [(C₆H₅CH₂)(CH(CH₃)₂)NH₂][CCl₃C(O)NHP(O)(O)(OCH₃)] (Pourayoubi & Sabbaghi, 2007), we report here on the synthesis and crystal structure of a new phosphaza-analogous of β-diketone, P(O)[NHC(O)C₆H₄(4-NO₂)][NHC₆H₁₁]₂. Single crystals of title compound were obtained from a solution of CH₃CN and CH₃OH after slow evaporation at room temperature. The phosphoryl and the carbonyl groups are *anti* and the phosphorus atom has a slightly distorted tetrahedral configuration (Fig. 1). The bond angles around the P atom are in the range of 101.89 (8)°–119.46 (8)°. The P—N₃ bond length (1.6966 (14) Å) is longer than the P—N₁ and P—N₂ bond lengths (1.6174 (16) Å and 1.6233 (14) Å). In the crystal network of title compound, P(O)[NHC(O)C₆H₄(4-NO₂)][NHC₆H₁₁]₂, molecules are linked *via* P=O⋯H—N (O1⋯N3 = 2.8229 (18) Å) and C=O⋯H—N (O2⋯N2 = 3.0578 (18) Å) hydrogen bonds in the linear arrangement along *a* axis. Moreover, molecules are aggregated through the weak hydrogen bonds O_{nitro}⋯H—N (O4⋯N1 = 3.305 (2) Å) parallel to the *c* axis and π–π stacking interactions between neighboring 4-NO₂—C₆H₄—C(O)NH— moieties [centroid–centroid distance = 3.759 (1) Å], Fig. 2.

Experimental

The reaction of phosphorus pentachloride (4.165 g, 20 mmol) and 4-nitrobenzamide (3.323 g, 20 mmol) in dry CCl₄ (70 ml) at 353 K (3 h) and then the treatment of formic acid (0.921 g, 20 mmol) at room temperature leads to 4-NO₂—C₆H₄C(O)NHP(O)Cl₂. The solid (4-NO₂—C₆H₄C(O)NHP(O)Cl₂) was washed with dry CCl₄. To a solution of (0.708 g, 2.5 mmol) 4-NO₂—C₆H₄C(O)NHP(O)Cl₂ in CH₃CN (40 ml), a solution of cyclohexylamine (0.992 g, 10 mmol) in CH₃CN (10 ml) was added dropwise at 273 K. After 6 h of stirring, the solvent was evaporated in vacuum. The solid was washed with distilled water. Single crystals were obtained from a solution of the title compound in CH₃CN and CH₃OH after slow evaporation at room temperature. IR (KBr, cm⁻¹): 3056, 2922, 2870, 2770, 2689, 2641, 2589, 2489, 2412, 2169, 2007, 1954, 1678, 1602, 1515, 1446, 1344, 1230, 1039, 963, 860, 736, 702.

Refinement

H atoms were placed in the calculated positions and included in the refinement in a riding-model approximation with C—H = 0.93–0.98 Å, N—H = 0.86 Å and $U_{\text{iso}}(\text{H}) = 1.2U_{\text{eq}}(\text{C}, \text{N})$.

Figures

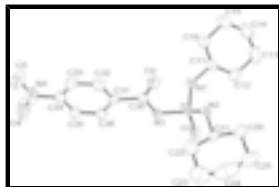


Fig. 1. The molecular structure of the title compound, indicating the atom labeling scheme. Displacement ellipsoids are drawn at the 50% probability level, the H atoms were omitted for clarity.

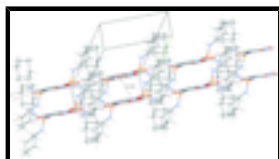


Fig. 2. Part of the crystal structure with hydrogen bonds shown as dashed lines and the centroid of phenyl rings as ball representation.

N,N'-Dicyclohexyl-*N''*-(4-nitrobenzoyl)phosphoric triamide

Crystal data

$C_{19}H_{29}N_4O_4P$	$Z = 2$
$M_r = 408.43$	$F(000) = 436$
Triclinic, $P\bar{1}$	$D_x = 1.283 \text{ Mg m}^{-3}$
Hall symbol: -P 1	Mo $K\alpha$ radiation, $\lambda = 0.71073 \text{ \AA}$
$a = 10.4091 (7) \text{ \AA}$	Cell parameters from 4113 reflections
$b = 10.8527 (9) \text{ \AA}$	$\theta = 3.3\text{--}29.2^\circ$
$c = 11.1116 (10) \text{ \AA}$	$\mu = 0.16 \text{ mm}^{-1}$
$\alpha = 99.764 (7)^\circ$	$T = 295 \text{ K}$
$\beta = 110.881 (7)^\circ$	Prism, colorless
$\gamma = 108.158 (7)^\circ$	$0.52 \times 0.31 \times 0.29 \text{ mm}$
$V = 1057.25 (18) \text{ \AA}^3$	

Data collection

Oxford Diffraction Xcalibur diffractometer with a Sapphire3 (Gemini Mo) detector	2915 reflections with $I > 2\sigma(I)$
Radiation source: Enhance (Mo) X-ray Source graphite	$R_{\text{int}} = 0.016$
Detector resolution: $16.3280 \text{ pixels mm}^{-1}$	$\theta_{\text{max}} = 25.0^\circ$, $\theta_{\text{min}} = 3.3^\circ$
ω scans	$h = -12 \rightarrow 12$
6746 measured reflections	$k = -12 \rightarrow 11$
3713 independent reflections	$l = -11 \rightarrow 13$

Refinement

Refinement on F^2	Secondary atom site location: difference Fourier map
Least-squares matrix: full	Hydrogen site location: inferred from neighbouring sites
$R[F^2 > 2\sigma(F^2)] = 0.040$	H-atom parameters constrained

$wR(F^2) = 0.115$	$w = 1/[\sigma^2(F_o^2) + (0.068P)^2]$
$S = 1.11$	where $P = (F_o^2 + 2F_c^2)/3$
3713 reflections	$(\Delta/\sigma)_{\max} = 0.001$
254 parameters	$\Delta\rho_{\max} = 0.38 \text{ e } \text{\AA}^{-3}$
0 restraints	$\Delta\rho_{\min} = -0.37 \text{ e } \text{\AA}^{-3}$
Primary atom site location: structure-invariant direct methods	Extinction correction: <i>SHELXL97</i> (Sheldrick, 2008), $F_c^* = kFc[1+0.001xFc^2\lambda^3/\sin(2\theta)]^{-1/4}$ Extinction coefficient: 0.015 (3)

Special details

Experimental. #__ type__ start__ end__ width__ exp.time_ 1 omega -7.00 53.00 1.0000 3.6500 omega__ theta__ kappa__ phi__ frames - 21.1985 77.0000 150.0000 60

#__ type__ start__ end__ width__ exp.time_ 2 omega -4.00 91.00 1.0000 3.6500 omega__ theta__ kappa__ phi__ frames - 21.1985 77.0000 30.0000 95

#__ type__ start__ end__ width__ exp.time_ 3 omega -51.00 47.00 1.0000 3.6500 omega__ theta__ kappa__ phi__ frames - 21.1985 - 37.0000 240.0000 98

#__ type__ start__ end__ width__ exp.time_ 4 omega -51.00 34.00 1.0000 3.6500 omega__ theta__ kappa__ phi__ frames - 21.1985 - 37.0000 150.0000 85

#__ type__ start__ end__ width__ exp.time_ 5 omega -6.00 33.00 1.0000 3.6500 omega__ theta__ kappa__ phi__ frames - 21.1985 77.0000 270.0000 39

Geometry. All e.s.d.'s (except the e.s.d. in the dihedral angle between two l.s. planes) are estimated using the full covariance matrix. The cell e.s.d.'s are taken into account individually in the estimation of e.s.d.'s in distances, angles and torsion angles; correlations between e.s.d.'s in cell parameters are only used when they are defined by crystal symmetry. An approximate (isotropic) treatment of cell e.s.d.'s is used for estimating e.s.d.'s involving l.s. planes.

Refinement. Refinement of F^2 against ALL reflections. The weighted R -factor wR and goodness of fit S are based on F^2 , conventional R -factors R are based on F , with F set to zero for negative F^2 . The threshold expression of $F^2 > \sigma(F^2)$ is used only for calculating R -factors(gt) *etc.* and is not relevant to the choice of reflections for refinement. R -factors based on F^2 are statistically about twice as large as those based on F , and R - factors based on ALL data will be even larger.

Fractional atomic coordinates and isotropic or equivalent isotropic displacement parameters (\AA^2)

	x	y	z	$U_{\text{iso}}^*/U_{\text{eq}}$
P	0.69819 (5)	0.43097 (5)	0.04401 (5)	0.03153 (17)
O1	0.59696 (13)	0.43337 (14)	0.10845 (13)	0.0427 (3)
O2	0.86256 (14)	0.52969 (15)	-0.11240 (13)	0.0494 (4)
O3	0.6421 (2)	0.7685 (2)	-0.64611 (17)	0.0824 (6)
O4	0.4469 (2)	0.7627 (2)	-0.62270 (19)	0.0973 (7)
N1	0.67651 (16)	0.28654 (15)	-0.04742 (16)	0.0416 (4)
H1	0.6103	0.2583	-0.1305	0.050*
N2	0.87293 (15)	0.49971 (15)	0.15558 (14)	0.0337 (4)
H2	0.9336	0.4661	0.1431	0.040*
N3	0.66090 (15)	0.51363 (15)	-0.07230 (14)	0.0329 (4)

supplementary materials

H3	0.5844	0.5345	-0.0898	0.039*
N4	0.5646 (2)	0.74999 (18)	-0.58613 (18)	0.0558 (5)
C11	0.7533 (2)	0.19656 (18)	-0.00942 (18)	0.0385 (4)
H11	0.8616	0.2500	0.0263	0.046*
C12	0.7254 (3)	0.1419 (2)	0.0981 (2)	0.0670 (7)
H12A	0.6181	0.0940	0.0675	0.080*
H12B	0.7635	0.2172	0.1799	0.080*
C13	0.8027 (4)	0.0438 (3)	0.1304 (3)	0.0905 (10)
H13A	0.9108	0.0945	0.1720	0.109*
H13B	0.7765	0.0044	0.1949	0.109*
C14	0.7562 (3)	-0.0698 (2)	0.0036 (3)	0.0779 (8)
H14A	0.8118	-0.1262	0.0263	0.093*
H14B	0.6500	-0.1271	-0.0324	0.093*
C15	0.7858 (3)	-0.0128 (3)	-0.1009 (3)	0.0711 (7)
H15A	0.7513	-0.0870	-0.1825	0.085*
H15B	0.8931	0.0377	-0.0678	0.085*
C16	0.7059 (3)	0.0814 (2)	-0.1346 (2)	0.0537 (6)
H16A	0.7290	0.1189	-0.2012	0.064*
H16B	0.5981	0.0292	-0.1739	0.064*
C21	0.9318 (2)	0.61724 (18)	0.27734 (18)	0.0372 (4)
H21	0.8543	0.6058	0.3101	0.045*
C22	0.9661 (3)	0.7503 (2)	0.2469 (2)	0.0772 (8)
H22A	0.8738	0.7497	0.1823	0.093*
H22B	1.0344	0.7586	0.2051	0.093*
C23	1.0354 (4)	0.8726 (3)	0.3722 (3)	0.0995 (10)
H23A	1.0617	0.9557	0.3479	0.119*
H23B	0.9625	0.8708	0.4078	0.119*
C24	1.1732 (3)	0.8739 (3)	0.4796 (3)	0.0952 (11)
H24A	1.2118	0.9505	0.5605	0.114*
H24B	1.2503	0.8853	0.4477	0.114*
C25	1.1371 (3)	0.7418 (3)	0.5140 (2)	0.0760 (8)
H25A	1.0672	0.7350	0.5540	0.091*
H25B	1.2284	0.7426	0.5803	0.091*
C26	1.0679 (2)	0.6172 (2)	0.3871 (2)	0.0556 (6)
H26A	1.1422	0.6182	0.3533	0.067*
H26B	1.0395	0.5342	0.4110	0.067*
C30	0.74698 (18)	0.54829 (18)	-0.13909 (17)	0.0333 (4)
C31	0.69513 (18)	0.60806 (17)	-0.25097 (17)	0.0314 (4)
C32	0.79254 (19)	0.65206 (19)	-0.30874 (19)	0.0399 (5)
H32	0.8865	0.6487	-0.2739	0.048*
C33	0.7513 (2)	0.7005 (2)	-0.41680 (19)	0.0434 (5)
H33	0.8163	0.7296	-0.4556	0.052*
C34	0.6122 (2)	0.70486 (19)	-0.46623 (17)	0.0396 (5)
C35	0.5142 (2)	0.6639 (2)	-0.41019 (19)	0.0426 (5)
H35	0.4210	0.6688	-0.4449	0.051*
C36	0.55611 (19)	0.61538 (19)	-0.30166 (18)	0.0387 (4)
H36	0.4911	0.5876	-0.2625	0.046*

Atomic displacement parameters (\AA^2)

	U^{11}	U^{22}	U^{33}	U^{12}	U^{13}	U^{23}
P	0.0300 (3)	0.0420 (3)	0.0339 (3)	0.0222 (2)	0.0166 (2)	0.0181 (2)
O1	0.0394 (7)	0.0653 (9)	0.0482 (8)	0.0331 (6)	0.0286 (6)	0.0328 (7)
O2	0.0414 (7)	0.0855 (11)	0.0506 (8)	0.0435 (7)	0.0294 (7)	0.0358 (8)
O3	0.0942 (13)	0.1094 (15)	0.0620 (11)	0.0376 (11)	0.0452 (11)	0.0528 (11)
O4	0.0850 (13)	0.159 (2)	0.0865 (13)	0.0732 (13)	0.0370 (11)	0.0858 (14)
N1	0.0420 (8)	0.0447 (9)	0.0346 (8)	0.0248 (7)	0.0071 (7)	0.0117 (7)
N2	0.0320 (8)	0.0443 (9)	0.0326 (8)	0.0249 (7)	0.0149 (7)	0.0108 (7)
N3	0.0298 (7)	0.0472 (9)	0.0370 (8)	0.0261 (7)	0.0186 (7)	0.0207 (7)
N4	0.0583 (11)	0.0567 (12)	0.0434 (10)	0.0178 (9)	0.0139 (9)	0.0231 (9)
C11	0.0371 (9)	0.0358 (10)	0.0421 (10)	0.0194 (8)	0.0116 (9)	0.0146 (9)
C12	0.1058 (19)	0.0580 (14)	0.0472 (13)	0.0402 (14)	0.0349 (13)	0.0232 (12)
C13	0.140 (3)	0.0675 (17)	0.0624 (16)	0.0553 (17)	0.0237 (17)	0.0380 (15)
C14	0.0989 (19)	0.0490 (14)	0.0778 (17)	0.0416 (14)	0.0189 (16)	0.0225 (14)
C15	0.0883 (18)	0.0575 (15)	0.0794 (17)	0.0467 (14)	0.0356 (15)	0.0188 (14)
C16	0.0703 (14)	0.0544 (13)	0.0483 (12)	0.0356 (11)	0.0280 (11)	0.0199 (11)
C21	0.0390 (10)	0.0445 (11)	0.0358 (10)	0.0222 (8)	0.0204 (8)	0.0114 (9)
C22	0.115 (2)	0.0475 (14)	0.0572 (15)	0.0301 (14)	0.0266 (15)	0.0183 (12)
C23	0.140 (3)	0.0415 (15)	0.088 (2)	0.0229 (16)	0.036 (2)	0.0070 (15)
C24	0.090 (2)	0.069 (2)	0.083 (2)	-0.0029 (16)	0.0424 (18)	-0.0226 (17)
C25	0.0643 (15)	0.105 (2)	0.0405 (13)	0.0401 (15)	0.0111 (12)	-0.0041 (14)
C26	0.0570 (13)	0.0683 (15)	0.0364 (11)	0.0329 (11)	0.0125 (10)	0.0075 (11)
C30	0.0309 (9)	0.0421 (10)	0.0314 (9)	0.0196 (8)	0.0145 (8)	0.0107 (8)
C31	0.0305 (9)	0.0338 (9)	0.0306 (9)	0.0141 (7)	0.0142 (8)	0.0081 (8)
C32	0.0320 (9)	0.0478 (11)	0.0426 (11)	0.0169 (8)	0.0175 (8)	0.0168 (9)
C33	0.0419 (10)	0.0517 (12)	0.0413 (11)	0.0162 (9)	0.0235 (9)	0.0187 (10)
C34	0.0466 (11)	0.0377 (10)	0.0287 (9)	0.0137 (8)	0.0124 (9)	0.0120 (8)
C35	0.0360 (10)	0.0548 (12)	0.0412 (11)	0.0238 (9)	0.0141 (9)	0.0209 (10)
C36	0.0351 (9)	0.0524 (12)	0.0390 (10)	0.0224 (9)	0.0204 (9)	0.0205 (9)

Geometric parameters (\AA , $^\circ$)

P—O1	1.4739 (13)	C16—H16B	0.9700
P—N1	1.6174 (16)	C21—C22	1.502 (3)
P—N2	1.6233 (14)	C21—C26	1.505 (3)
P—N3	1.6966 (14)	C21—H21	0.9800
O2—C30	1.222 (2)	C22—C23	1.510 (3)
O3—N4	1.210 (2)	C22—H22A	0.9700
O4—N4	1.206 (2)	C22—H22B	0.9700
N1—C11	1.468 (2)	C23—C24	1.498 (4)
N1—H1	0.8600	C23—H23A	0.9700
N2—C21	1.473 (2)	C23—H23B	0.9700
N2—H2	0.8600	C24—C25	1.514 (4)
N3—C30	1.362 (2)	C24—H24A	0.9700
N3—H3	0.8600	C24—H24B	0.9700
N4—C34	1.471 (2)	C25—C26	1.536 (3)

supplementary materials

C11—C12	1.498 (3)	C25—H25A	0.9700
C11—C16	1.509 (3)	C25—H25B	0.9700
C11—H11	0.9800	C26—H26A	0.9700
C12—C13	1.538 (3)	C26—H26B	0.9700
C12—H12A	0.9700	C30—C31	1.507 (2)
C12—H12B	0.9700	C31—C36	1.387 (2)
C13—C14	1.514 (4)	C31—C32	1.391 (2)
C13—H13A	0.9700	C32—C33	1.374 (3)
C13—H13B	0.9700	C32—H32	0.9300
C14—C15	1.485 (4)	C33—C34	1.373 (3)
C14—H14A	0.9700	C33—H33	0.9300
C14—H14B	0.9700	C34—C35	1.375 (3)
C15—C16	1.521 (3)	C35—C36	1.380 (3)
C15—H15A	0.9700	C35—H35	0.9300
C15—H15B	0.9700	C36—H36	0.9300
C16—H16A	0.9700		
O1—P—N1	119.46 (8)	C22—C21—C26	111.50 (17)
O1—P—N2	111.42 (7)	N2—C21—H21	107.9
N1—P—N2	105.05 (8)	C22—C21—H21	107.9
O1—P—N3	105.89 (7)	C26—C21—H21	107.9
N1—P—N3	101.89 (8)	C21—C22—C23	112.7 (2)
N2—P—N3	112.93 (7)	C21—C22—H22A	109.0
C11—N1—P	129.49 (13)	C23—C22—H22A	109.0
C11—N1—H1	115.3	C21—C22—H22B	109.0
P—N1—H1	115.3	C23—C22—H22B	109.0
C21—N2—P	122.67 (11)	H22A—C22—H22B	107.8
C21—N2—H2	118.7	C24—C23—C22	111.5 (3)
P—N2—H2	118.7	C24—C23—H23A	109.3
C30—N3—P	122.74 (11)	C22—C23—H23A	109.3
C30—N3—H3	118.6	C24—C23—H23B	109.3
P—N3—H3	118.6	C22—C23—H23B	109.3
O4—N4—O3	122.9 (2)	H23A—C23—H23B	108.0
O4—N4—C34	118.1 (2)	C23—C24—C25	110.5 (2)
O3—N4—C34	118.90 (19)	C23—C24—H24A	109.6
N1—C11—C12	112.89 (17)	C25—C24—H24A	109.6
N1—C11—C16	109.24 (15)	C23—C24—H24B	109.6
C12—C11—C16	110.75 (16)	C25—C24—H24B	109.6
N1—C11—H11	107.9	H24A—C24—H24B	108.1
C12—C11—H11	107.9	C24—C25—C26	111.3 (2)
C16—C11—H11	107.9	C24—C25—H25A	109.4
C11—C12—C13	111.0 (2)	C26—C25—H25A	109.4
C11—C12—H12A	109.4	C24—C25—H25B	109.4
C13—C12—H12A	109.4	C26—C25—H25B	109.4
C11—C12—H12B	109.4	H25A—C25—H25B	108.0
C13—C12—H12B	109.4	C21—C26—C25	111.20 (18)
H12A—C12—H12B	108.0	C21—C26—H26A	109.4
C14—C13—C12	111.5 (2)	C25—C26—H26A	109.4
C14—C13—H13A	109.3	C21—C26—H26B	109.4
C12—C13—H13A	109.3	C25—C26—H26B	109.4

C14—C13—H13B	109.3	H26A—C26—H26B	108.0
C12—C13—H13B	109.3	O2—C30—N3	121.79 (16)
H13A—C13—H13B	108.0	O2—C30—C31	119.65 (16)
C15—C14—C13	110.7 (2)	N3—C30—C31	118.55 (14)
C15—C14—H14A	109.5	C36—C31—C32	119.53 (17)
C13—C14—H14A	109.5	C36—C31—C30	123.97 (16)
C15—C14—H14B	109.5	C32—C31—C30	116.44 (15)
C13—C14—H14B	109.5	C33—C32—C31	120.64 (17)
H14A—C14—H14B	108.1	C33—C32—H32	119.7
C14—C15—C16	111.0 (2)	C31—C32—H32	119.7
C14—C15—H15A	109.4	C34—C33—C32	118.64 (18)
C16—C15—H15A	109.4	C34—C33—H33	120.7
C14—C15—H15B	109.4	C32—C33—H33	120.7
C16—C15—H15B	109.4	C33—C34—C35	122.12 (17)
H15A—C15—H15B	108.0	C33—C34—N4	118.82 (18)
C11—C16—C15	111.21 (18)	C35—C34—N4	119.03 (17)
C11—C16—H16A	109.4	C34—C35—C36	119.04 (17)
C15—C16—H16A	109.4	C34—C35—H35	120.5
C11—C16—H16B	109.4	C36—C35—H35	120.5
C15—C16—H16B	109.4	C35—C36—C31	120.01 (17)
H16A—C16—H16B	108.0	C35—C36—H36	120.0
N2—C21—C22	112.00 (16)	C31—C36—H36	120.0
N2—C21—C26	109.51 (15)		
O1—P—N1—C11	-95.68 (17)	C23—C24—C25—C26	56.3 (3)
N2—P—N1—C11	30.22 (19)	N2—C21—C26—C25	177.50 (18)
N3—P—N1—C11	148.19 (16)	C22—C21—C26—C25	53.0 (3)
O1—P—N2—C21	-35.25 (16)	C24—C25—C26—C21	-55.1 (3)
N1—P—N2—C21	-166.00 (13)	P—N3—C30—O2	-4.9 (2)
N3—P—N2—C21	83.79 (15)	P—N3—C30—C31	173.61 (12)
O1—P—N3—C30	170.69 (13)	O2—C30—C31—C36	170.60 (17)
N1—P—N3—C30	-63.67 (15)	N3—C30—C31—C36	-8.0 (3)
N2—P—N3—C30	48.50 (15)	O2—C30—C31—C32	-6.5 (2)
P—N1—C11—C12	62.5 (2)	N3—C30—C31—C32	174.97 (15)
P—N1—C11—C16	-173.78 (14)	C36—C31—C32—C33	-1.1 (3)
N1—C11—C12—C13	177.69 (19)	C30—C31—C32—C33	176.11 (16)
C16—C11—C12—C13	54.8 (3)	C31—C32—C33—C34	0.2 (3)
C11—C12—C13—C14	-54.6 (3)	C32—C33—C34—C35	0.7 (3)
C12—C13—C14—C15	55.3 (3)	C32—C33—C34—N4	-176.94 (17)
C13—C14—C15—C16	-56.7 (3)	O4—N4—C34—C33	-174.8 (2)
N1—C11—C16—C15	178.52 (19)	O3—N4—C34—C33	7.5 (3)
C12—C11—C16—C15	-56.5 (3)	O4—N4—C34—C35	7.5 (3)
C14—C15—C16—C11	57.7 (3)	O3—N4—C34—C35	-170.23 (19)
P—N2—C21—C22	-81.3 (2)	C33—C34—C35—C36	-0.7 (3)
P—N2—C21—C26	154.44 (15)	N4—C34—C35—C36	176.95 (17)
N2—C21—C22—C23	-176.5 (2)	C34—C35—C36—C31	-0.2 (3)
C26—C21—C22—C23	-53.4 (3)	C32—C31—C36—C35	1.1 (3)
C21—C22—C23—C24	55.0 (4)	C30—C31—C36—C35	-175.88 (17)
C22—C23—C24—C25	-55.9 (3)		

supplementary materials

Hydrogen-bond geometry (Å, °)

$D-H\cdots A$	$D-H$	$H\cdots A$	$D\cdots A$	$D-H\cdots A$
N1—H1 \cdots O4 ⁱ	0.86	2.54	3.305 (2)	148.
N2—H2 \cdots O2 ⁱⁱ	0.86	2.25	3.0578 (18)	156.
N3—H3 \cdots O1 ⁱⁱⁱ	0.86	1.97	2.8229 (18)	170.

Symmetry codes: (i) $-x+1, -y+1, -z-1$; (ii) $-x+2, -y+1, -z$; (iii) $-x+1, -y+1, -z$.

Fig. 1

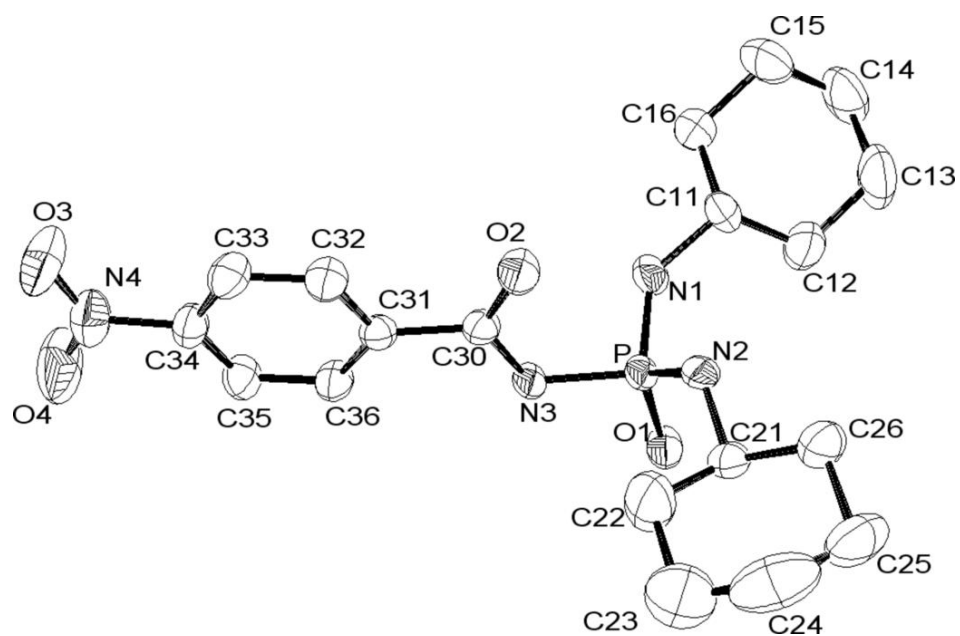


Fig. 2

