

Acta Crystallographica Section E

Structure Reports

Online

ISSN 1600-5368

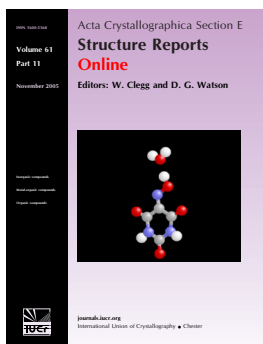
Editors: W.T.A. Harrison, J. Simpson and M. Weil

1,1'-(Ethane-1,2-diyl)dipyridinium bis(iodate)

Mostafa Gholizadeh, Behrooz Maleki, Mehrdad Pourayoubi, Mehdi Kia and Behrouz Notash

Acta Cryst. (2011). E67, o1614–o1615

This open-access article is distributed under the terms of the Creative Commons Attribution Licence <http://creativecommons.org/licenses/by/2.0/uk/legalcode>, which permits unrestricted use, distribution, and reproduction in any medium, provided the original authors and source are cited.



Acta Crystallographica Section E: Structure Reports Online is the IUCr's highly popular open-access structural journal. It provides a simple and easily accessible publication mechanism for the growing number of inorganic, metal-organic and organic crystal structure determinations. The electronic submission, validation, refereeing and publication facilities of the journal ensure very rapid and high-quality publication, whilst key indicators and validation reports provide measures of structural reliability. The journal publishes over 4000 structures per year. The average publication time is less than one month.

Crystallography Journals Online is available from journals.iucr.org

1,1'-(Ethane-1,2-diyl)dipyridinium bis(iodate)

Mostafa Gholizadeh,^{a*} Behrooz Maleki,^b Mehrdad Pourayoubi,^a Mehdi Kia^b and Behrouz Notash^c

^aDepartment of Chemistry, Ferdowsi University of Mashhad, Mashhad 91779, Iran,

^bDepartment of Chemistry, Sabzevar Tarbiat Moallem University, Sabzevar, Iran, and

^cChemistry Department, Shahid Beheshti University, G. C. Evin, Tehran

1983963113, Iran

Correspondence e-mail: mostafa_gholizadeh@yahoo.com

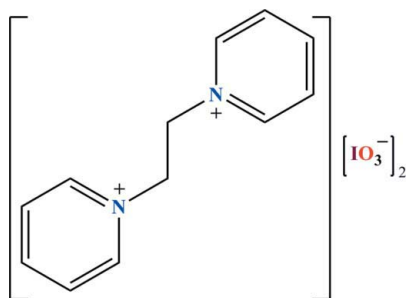
Received 16 May 2011; accepted 31 May 2011

Key indicators: single-crystal X-ray study; $T = 298$ K; mean $\sigma(\text{C}-\text{C}) = 0.005$ Å; R factor = 0.027; wR factor = 0.054; data-to-parameter ratio = 20.3.

The title salt, $\text{C}_{12}\text{H}_{14}\text{N}_2^{2+} \cdot 2\text{IO}_3^-$, exhibits two crystallographically independent iodate anions, the I atoms of which are each in a trigonal–pyramidal environment. In the dication, the two pyridine rings adopt an *anti* conformation with respect to each other; the angle between these two rings is 3.84 (19)°. In the crystal structure, $\text{C}-\text{H} \cdots \text{O}$ hydrogen bonds between the cations and anions lead to the formation of layers arranged parallel to the *ab* plane. $\text{I} \cdots \text{O}$ halogen bonds [$R_2^2(4)$ graph-set motif] range between 2.873 (2) and 3.036 (3) Å and connect neighbouring IO_3^- anions with each other along $[100]$, so as to create a three-dimensional network.

Related literature

For background about the oxidative properties of the iodate anion, see: Tamami *et al.* (2003); Singh *et al.* (2008). For related structures, see: Gholizadeh *et al.* (2011); Petrosyan *et al.* (1999, 2000). For graph-set analysis of hydrogen bonds, see: Bernstein *et al.* (1995). For the Cambridge Structural Database, see: Allen (2002).



Experimental

Crystal data

$\text{C}_{12}\text{H}_{14}\text{N}_2^{2+} \cdot 2\text{IO}_3^-$

$M_r = 536.05$

Monoclinic, $P2_1/n$

$a = 7.9357$ (4) Å

$b = 10.2310$ (4) Å

$c = 18.6041$ (9) Å

$\beta = 91.017$ (4)°

$V = 1510.23$ (12) Å³

$Z = 4$

Mo $K\alpha$ radiation

$\mu = 4.20$ mm⁻¹

$T = 298$ K

$0.34 \times 0.24 \times 0.23$ mm

Data collection

Stoe IPDS II diffractometer

Absorption correction: numerical

[shape of crystal determined

optically (*X-RED* and

X-SHAPE; Stoe & Cie, 2005)]

$T_{\min} = 0.310$, $T_{\max} = 0.379$

10467 measured reflections

4032 independent reflections

3081 reflections with $I > 2\sigma(I)$

$R_{\text{int}} = 0.036$

Refinement

$R[F^2 > 2\sigma(F^2)] = 0.027$

$wR(F^2) = 0.054$

$S = 1.01$

4032 reflections

199 parameters

H-atom parameters constrained

$\Delta\rho_{\text{max}} = 0.72$ e Å⁻³

$\Delta\rho_{\text{min}} = -0.74$ e Å⁻³

Table 1

Hydrogen-bond geometry (Å, °).

$D-H \cdots A$	$D-H$	$H \cdots A$	$D \cdots A$	$D-H \cdots A$
$\text{C1}-\text{H1} \cdots \text{O3}^{\text{i}}$	0.93	2.22	3.095 (5)	157
$\text{C3}-\text{H3} \cdots \text{O2}^{\text{ii}}$	0.93	2.37	3.133 (5)	139
$\text{C5}-\text{H5} \cdots \text{O4}^{\text{iii}}$	0.93	2.42	3.210 (5)	143
$\text{C6}-\text{H6B} \cdots \text{O4}^{\text{i}}$	0.97	2.37	3.230 (5)	148
$\text{C7}-\text{H7A} \cdots \text{O2}$	0.97	2.52	3.420 (4)	154
$\text{C7}-\text{H7B} \cdots \text{O1}^{\text{i}}$	0.97	2.40	3.311 (5)	156
$\text{C8}-\text{H8} \cdots \text{O1}^{\text{i}}$	0.93	2.41	3.225 (5)	146
$\text{C9}-\text{H9} \cdots \text{O1}^{\text{iv}}$	0.93	2.49	3.297 (4)	146
$\text{C10}-\text{H10} \cdots \text{O6}^{\text{v}}$	0.93	2.18	3.051 (5)	156
$\text{C12}-\text{H12} \cdots \text{O5}^{\text{iii}}$	0.93	2.07	2.982 (5)	167

Symmetry codes: (i) $-x + \frac{3}{2}$, $y - \frac{1}{2}$, $-z + \frac{3}{2}$; (ii) $-x + \frac{3}{2}$, $y + \frac{1}{2}$, $-z + \frac{3}{2}$; (iii) $x + 1$, y , z ; (iv) x , $y - 1$, z ; (v) $x + 1$, $y - 1$, z .

Data collection: *X-Area* (Stoe & Cie, 2005); cell refinement: *X-Area*; data reduction: *X-Area*; program(s) used to solve structure: *SHELXS97* (Sheldrick, 2008); program(s) used to refine structure: *SHELXL97* (Sheldrick, 2008); molecular graphics: *ORTEP-3 for Windows* (Farrugia, 1997) and *Mercury* (Macrae *et al.*, 2008); software used to prepare material for publication: *WinGX* (Farrugia, 1999).

Support of this investigation by Ferdowsi University of Mashhad is gratefully acknowledged.

Supplementary data and figures for this paper are available from the IUCr electronic archives (Reference: ZL2372).

References

- Allen, F. H. (2002). *Acta Cryst.* **B58**, 380–388.
 Bernstein, J., Davis, R. E., Shimoni, L. & Chang, N.-L. (1995). *Angew. Chem. Int. Ed. Engl.* **34**, 1555–1573.
 Farrugia, L. J. (1997). *J. Appl. Cryst.* **30**, 565.
 Farrugia, L. J. (1999). *J. Appl. Cryst.* **32**, 837–838.
 Gholizadeh, M., Hojati, S. F., Pourayoubi, M., Maleki, B., Kia, M. & Notash, B. (2011). *X-ray Struct. Anal. Online*. Submitted.
 Macrae, C. F., Bruno, I. J., Chisholm, J. A., Edgington, P. R., McCabe, P., Pidcock, E., Rodriguez-Monge, L., Taylor, R., van de Streek, J. & Wood, P. A. (2008). *J. Appl. Cryst.* **41**, 466–470.

- Petrosyan, A. M., Burbelo, V. M., Tamazyan, R. A., Karapetyan, H. A. & Sukiasyan, R. P. (2000). *Z. Naturforsch. Teil A*, **55**, 199–206.
- Petrosyan, A. M., Sukiasyan, R. P., Terzyan, S. S. & Burbelo, V. M. (1999). *Acta Cryst. B* **55**, 221–225.
- Sheldrick, G. M. (2008). *Acta Cryst. A* **64**, 112–122.
- Singh, S. P., Singh, A. K. & Singh, A. K. (2008). *J. Mol. Catal. A Chem.* **293**, 97–102.
- Stoe & Cie (2005). *X-AREA, X-RED and X-SHAPE*. Stoe & Cie, Darmstadt, Germany.
- Tamami, B., Parvanak-Borujeny, K. & Khakzad, M. M. (2003). *Iran. Polym. J.* **12**, 331–338.

supplementary materials

Acta Cryst. (2011). E67, o1614-o1615 [doi:10.1107/S1600536811020927]

1,1'-(Ethane-1,2-diyl)dipyridinium bis(iodate)

M. Gholizadeh, B. Maleki, M. Pourayoubi, M. Kia and B. Notash

Comment

The iodate anion has the capability to oxidize various functional groups, so a range of salts of this anion, such as the potassium salt, have been prepared (Singh *et al.*, 2008). Iodate salts are also available supported on the commercial anionic resin Amberlyst A26, and also on poly(vinylpyridine) (Tamami *et al.*, 2003). In a recent publication, we described the synthesis and crystal structure of bis pyridinium 1,2-ethane periodate (Gholizadeh *et al.*, 2011). Here, we report the synthesis and single-crystal X-ray structure determination of the title iodate salt. Single crystals were obtained from CH₃CN at room temperature. The asymmetric unit of the title salt, C₁₂H₁₄N₂²⁺·2IO₃⁻ (Fig. 1), contains two crystallographically independent iodate anions and one bis pyridinium 1,2-ethane dication. Each of the I atoms in the iodate anions adopts a trigonal pyramidal geometry, the bond angles at the I atoms vary in the range from 101.03 (12)° to 101.31 (13)° for I1 and 98.89 (14)° to 102.12 (18)° for I2. The I—O bond lengths (in the range from 1.779 (3) Å to 1.803 (3) Å) and the O—I—O bond angles are comparable to those in similar compounds like for example in [C₆H₁₆N₂O₂]²⁺[HI₂O₆]¹⁻[IO₃]¹⁻ (Petrosyan *et al.*, 1999).

In the dication, the two pyridine moieties adopt an *anti* orientation with respect to one another. Some C—H···O hydrogen bonds, with C···O distances in the range from 2.888 (4) Å to 3.420 (4) Å, lead to a 2-D aggregation parallel to (001), Table 1 and Fig. 2. The I···O contacts (I1···O5ⁱ = 2.873 (2) Å, O3—I1···O5ⁱ = 163.07 (10)°, symmetry code: (i) 1 + x, y, z; O3···I2 = 2.961 (3) Å, I1—O3···I2 = 111.02 (13)°; I1···O5ⁱⁱ = 3.000 (3) Å, O1—I1···O5ⁱⁱ = 169.45 (11)°, symmetry code: (ii) 1 - x, 1 - y, 2 - z; I2···O2ⁱⁱ = 3.036 (3) Å, I2···O2ⁱⁱ—I1ⁱⁱ = 99.84°, symmetry code: (ii) 1 - x, 1 - y, 2 - z) involve IO₃⁻ anions with each other, building R₂²(4) rings along the *a* axis, which connect the two-dimensional structure into a three-dimensional network (Fig. 3). The I···O distances are comparable to those in similar iodate salts (CSD, Version 5.32, November 2010 update; Allen, 2002) *e.g.* in bis(β-alanine) bis(iodate) monohydrate (CSD refcode ICAYAM; Petrosyan *et al.*, 2000). Consistent with the n-σ* character of the I···O halogen bond, the shortening of the I···O interaction distance leads to lengthening of the corresponding O—I covalent bond. The usual motif, which is found for iodate salts, is a four-membered ring containing two O and two I atoms and four I···O halogen bonds; however, a few other motifs are also found for crystal packing based on halogen bonds (CSD refcode ICAYEQ; Petrosyan *et al.*, 2000).

Experimental

Preparation of bis pyridinium 1,2-ethane dibromide: 1,2-Dibromoethane (22 mmol) was added to pyridine (44.8 mmol) and dimethylformamide (40 ml) and refluxed. After 2 h, the precipitate was filtered and washed with diethyl ether and dried.

Preparation of title salt: To a solution of bis pyridinium 1,2-ethane dibromide (10 mmol) in H₂O (25 ml), a solution of NaIO₃ (20 mmol) in H₂O (25 ml) was added and stirred. After 1 h, the precipitate was filtered and washed with H₂O and crystallized from CH₃CN at room temperature (yield: approximately 60%). ¹H NMR (500.13 MHz, DMSO-d₆, 300 K,

supplementary materials

TMS): 5.23 (*s*, 4H, 2CH₂), 8.21 (*t*, 4H, Ar—H), 8.69 (*t*, 2H, Ar—H), 8.96 p.p.m. (*d*, 4H, Ar—H). ¹³C NMR (125.76 MHz, 300 K, TMS): 60.63, 129.36, 146.18, 147.54 p.p.m.

Refinement

Carbon-bound H atoms were placed in calculated positions, C—H = 0.93 Å (aromatic) and 0.97 Å (CH₂), and were included in the refinement using a riding model approximation, with $U_{\text{iso}} = 1.2U_{\text{eq}}(\text{C})$.

Figures

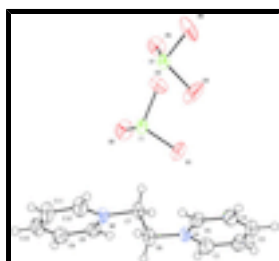


Fig. 1. Molecular structure and atom labelling scheme for title salt with displacement ellipsoids drawn at the 50% probability level.

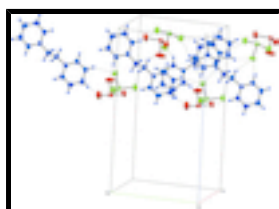


Fig. 2. Part of the crystal structure of title compound with C—H...O hydrogen bonds shown as dotted lines. The two crystallographically independent iodate anions are shown in green and red colours, respectively, and the dication is coloured blue.

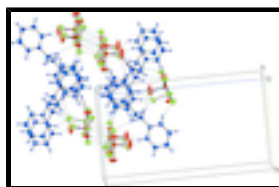


Fig. 3. Part of the crystal packing showing the C—H...O hydrogen bonds and the I...O halogen bonds. The two crystallographically independent iodate anions are shown in green and red colours, respectively, and the dication is coloured blue.

1,1'-(Ethane-1,2-diyl)dipyridinium bis(iodate)

Crystal data

$\text{C}_{12}\text{H}_{14}\text{N}_2^{2+} \cdot 2\text{IO}_3^-$

$M_r = 536.05$

Monoclinic, $P2_1/n$

Hall symbol: $-P\ 2_1n$

$a = 7.9357(4)\ \text{\AA}$

$b = 10.2310(4)\ \text{\AA}$

$c = 18.6041(9)\ \text{\AA}$

$\beta = 91.017(4)^\circ$

$V = 1510.23(12)\ \text{\AA}^3$

$Z = 4$

$F(000) = 1016$

$D_x = 2.358\ \text{Mg m}^{-3}$

Melting point: 435 K

Mo $K\alpha$ radiation, $\lambda = 0.71073\ \text{\AA}$

Cell parameters from 4032 reflections

$\theta = 2.2\text{--}29.2^\circ$

$\mu = 4.20\ \text{mm}^{-1}$

$T = 298\ \text{K}$

Prism, yellow

$0.34 \times 0.24 \times 0.23\ \text{mm}$

Data collection

Stoe IPDS II diffractometer	4032 independent reflections
Radiation source: fine-focus sealed tube graphite	3081 reflections with $I > 2\sigma(I)$ $R_{\text{int}} = 0.036$
Detector resolution: 0.15 pixels mm^{-1}	$\theta_{\text{max}} = 29.2^\circ$, $\theta_{\text{min}} = 2.2^\circ$
rotation method scans	$h = -8 \rightarrow 10$
Absorption correction: numerical [shape of crystal determined optically (<i>X-RED</i> and <i>X-k</i> = $-12 \rightarrow 14$ <i>SHAPE</i> ; Stoe & Cie, 2005)]	
$T_{\text{min}} = 0.310$, $T_{\text{max}} = 0.379$	$l = -25 \rightarrow 25$
10467 measured reflections	

Refinement

Refinement on F^2	Primary atom site location: structure-invariant direct methods
Least-squares matrix: full	Secondary atom site location: difference Fourier map
$R[F^2 > 2\sigma(F^2)] = 0.027$	Hydrogen site location: inferred from neighbouring sites
$wR(F^2) = 0.054$	H-atom parameters constrained
$S = 1.01$	$w = 1/[\sigma^2(F_o^2) + (0.0252P)^2]$
4032 reflections	where $P = (F_o^2 + 2F_c^2)/3$
199 parameters	$(\Delta/\sigma)_{\text{max}} = 0.002$
0 restraints	$\Delta\rho_{\text{max}} = 0.72 \text{ e } \text{\AA}^{-3}$
	$\Delta\rho_{\text{min}} = -0.74 \text{ e } \text{\AA}^{-3}$

Special details

Geometry. All e.s.d.'s (except the e.s.d. in the dihedral angle between two l.s. planes) are estimated using the full covariance matrix. The cell e.s.d.'s are taken into account individually in the estimation of e.s.d.'s in distances, angles and torsion angles; correlations between e.s.d.'s in cell parameters are only used when they are defined by crystal symmetry. An approximate (isotropic) treatment of cell e.s.d.'s is used for estimating e.s.d.'s involving l.s. planes.

Refinement. Refinement of F^2 against ALL reflections. The weighted R -factor wR and goodness of fit S are based on F^2 , conventional R -factors R are based on F , with F set to zero for negative F^2 . The threshold expression of $F^2 > \sigma(F^2)$ is used only for calculating R -factors(gt) *etc.* and is not relevant to the choice of reflections for refinement. R -factors based on F^2 are statistically about twice as large as those based on F , and R -factors based on ALL data will be even larger.

Fractional atomic coordinates and isotropic or equivalent isotropic displacement parameters (\AA^2)

	x	y	z	$U_{\text{iso}}^*/U_{\text{eq}}$
I1	0.83152 (3)	0.624927 (17)	0.927824 (10)	0.02673 (6)
O1	0.8505 (4)	0.6730 (3)	0.83552 (12)	0.0460 (6)
N1	1.0346 (4)	0.4963 (3)	0.69249 (13)	0.0308 (6)
O2	0.7306 (4)	0.4690 (2)	0.91801 (14)	0.0494 (7)

supplementary materials

C5	1.0641 (5)	0.6193 (3)	0.71494 (18)	0.0369 (8)
H5	1.1127	0.6341	0.7601	0.044*
O3	0.6578 (4)	0.7251 (3)	0.95556 (14)	0.0479 (6)
C1	0.9644 (5)	0.4709 (4)	0.62715 (17)	0.0392 (8)
H1	0.9464	0.3852	0.6123	0.047*
C7	0.9171 (5)	0.3298 (3)	0.77240 (18)	0.0371 (8)
H7A	0.8658	0.3941	0.8035	0.045*
H7B	0.8373	0.3088	0.7340	0.045*
C2	0.9203 (5)	0.5730 (4)	0.58323 (18)	0.0483 (10)
H2	0.8709	0.5568	0.5384	0.058*
C6	1.0776 (5)	0.3854 (3)	0.7409 (2)	0.0412 (8)
H6A	1.1523	0.4151	0.7793	0.049*
H6B	1.1354	0.3180	0.7142	0.049*
C4	1.0226 (6)	0.7226 (4)	0.67134 (19)	0.0473 (10)
H4	1.0442	0.8078	0.6863	0.057*
C3	0.9487 (6)	0.6991 (4)	0.6051 (2)	0.0504 (10)
H3	0.9182	0.7685	0.5754	0.061*
N2	0.9590 (4)	0.2100 (3)	0.81418 (13)	0.0316 (6)
C8	0.9223 (5)	0.0913 (3)	0.78694 (18)	0.0346 (7)
H8	0.8662	0.0836	0.7428	0.042*
C12	1.0371 (6)	0.2234 (4)	0.87829 (19)	0.0467 (10)
H12	1.0576	0.3064	0.8969	0.056*
C9	0.9685 (5)	-0.0187 (3)	0.82504 (18)	0.0404 (8)
H9	0.9432	-0.1010	0.8066	0.048*
C11	1.0868 (6)	0.1146 (4)	0.9166 (2)	0.0515 (11)
H11	1.1442	0.1238	0.9603	0.062*
C10	1.0514 (5)	-0.0078 (4)	0.8899 (2)	0.0442 (9)
H10	1.0833	-0.0821	0.9155	0.053*
I2	0.33160 (3)	0.593964 (19)	0.925200 (11)	0.02945 (6)
O5	0.1485 (3)	0.4896 (2)	0.92384 (14)	0.0438 (6)
O4	0.3671 (4)	0.6018 (4)	0.83116 (14)	0.0749 (12)
O6	0.2414 (4)	0.7504 (3)	0.94274 (19)	0.0656 (9)

Atomic displacement parameters (\AA^2)

	U^{11}	U^{22}	U^{33}	U^{12}	U^{13}	U^{23}
I1	0.02842 (11)	0.02451 (10)	0.02716 (9)	-0.00238 (8)	-0.00252 (7)	0.00285 (7)
O1	0.0538 (17)	0.0565 (17)	0.0277 (11)	-0.0048 (13)	-0.0004 (11)	0.0123 (10)
N1	0.0380 (16)	0.0258 (13)	0.0286 (12)	0.0015 (11)	-0.0018 (11)	0.0048 (9)
O2	0.0594 (18)	0.0343 (13)	0.0544 (15)	-0.0173 (13)	-0.0005 (13)	-0.0029 (11)
C5	0.047 (2)	0.0340 (17)	0.0299 (16)	-0.0026 (15)	-0.0014 (14)	-0.0013 (12)
O3	0.0406 (16)	0.0450 (15)	0.0582 (16)	0.0126 (12)	-0.0007 (12)	-0.0046 (12)
C1	0.046 (2)	0.0359 (18)	0.0360 (17)	-0.0001 (16)	-0.0035 (15)	-0.0060 (13)
C7	0.044 (2)	0.0264 (16)	0.0404 (17)	0.0055 (15)	-0.0051 (15)	0.0099 (13)
C2	0.053 (3)	0.063 (3)	0.0291 (17)	0.007 (2)	-0.0044 (16)	0.0034 (16)
C6	0.041 (2)	0.0327 (18)	0.050 (2)	0.0020 (15)	-0.0076 (16)	0.0124 (14)
C4	0.068 (3)	0.0268 (17)	0.047 (2)	0.0056 (17)	0.0094 (19)	0.0022 (14)
C3	0.060 (3)	0.045 (2)	0.046 (2)	0.0159 (19)	0.0063 (18)	0.0194 (16)

N2	0.0399 (16)	0.0245 (13)	0.0303 (13)	0.0009 (11)	-0.0042 (11)	0.0013 (9)
C8	0.040 (2)	0.0324 (17)	0.0317 (16)	-0.0021 (14)	0.0018 (14)	-0.0041 (12)
C12	0.070 (3)	0.0299 (17)	0.0399 (18)	-0.0026 (18)	-0.0132 (18)	-0.0030 (14)
C9	0.051 (2)	0.0248 (16)	0.0453 (19)	-0.0029 (15)	0.0054 (16)	-0.0021 (13)
C11	0.069 (3)	0.041 (2)	0.043 (2)	-0.0026 (19)	-0.019 (2)	0.0085 (15)
C10	0.052 (2)	0.0284 (17)	0.053 (2)	0.0031 (16)	-0.0008 (17)	0.0099 (14)
I2	0.02761 (12)	0.03071 (11)	0.02985 (10)	-0.00204 (9)	-0.00418 (8)	0.00538 (7)
O5	0.0388 (15)	0.0344 (13)	0.0581 (15)	-0.0117 (11)	-0.0027 (11)	-0.0044 (11)
O4	0.054 (2)	0.142 (4)	0.0285 (14)	-0.014 (2)	-0.0028 (13)	0.0167 (15)
O6	0.063 (2)	0.0259 (14)	0.106 (2)	0.0098 (14)	-0.0290 (18)	-0.0010 (14)

Geometric parameters (\AA , $^\circ$)

I1—O2	1.793 (2)	C4—C3	1.376 (5)
I1—O1	1.795 (2)	C4—H4	0.9300
I1—O3	1.801 (3)	C3—H3	0.9300
N1—C5	1.345 (4)	N2—C12	1.341 (4)
N1—C1	1.353 (4)	N2—C8	1.346 (4)
N1—C6	1.485 (4)	C8—C9	1.376 (5)
C5—C4	1.369 (5)	C8—H8	0.9300
C5—H5	0.9300	C12—C11	1.375 (5)
C1—C2	1.367 (5)	C12—H12	0.9300
C1—H1	0.9300	C9—C10	1.368 (5)
C7—N2	1.486 (4)	C9—H9	0.9300
C7—C6	1.522 (5)	C11—C10	1.375 (5)
C7—H7A	0.9700	C11—H11	0.9300
C7—H7B	0.9700	C10—H10	0.9300
C2—C3	1.371 (6)	I2—O4	1.779 (3)
C2—H2	0.9300	I2—O6	1.786 (3)
C6—H6A	0.9700	I2—O5	1.803 (3)
C6—H6B	0.9700		
O2—I1—O1	101.03 (12)	C5—C4—C3	119.3 (4)
O2—I1—O3	101.10 (14)	C5—C4—H4	120.3
O1—I1—O3	101.31 (13)	C3—C4—H4	120.3
C5—N1—C1	121.7 (3)	C2—C3—C4	119.7 (3)
C5—N1—C6	119.3 (3)	C2—C3—H3	120.1
C1—N1—C6	119.0 (3)	C4—C3—H3	120.1
N1—C5—C4	120.0 (3)	C12—N2—C8	121.4 (3)
N1—C5—H5	120.0	C12—N2—C7	118.5 (3)
C4—C5—H5	120.0	C8—N2—C7	120.2 (3)
N1—C1—C2	119.2 (3)	N2—C8—C9	119.3 (3)
N1—C1—H1	120.4	N2—C8—H8	120.3
C2—C1—H1	120.4	C9—C8—H8	120.3
N2—C7—C6	109.2 (3)	N2—C12—C11	120.1 (3)
N2—C7—H7A	109.8	N2—C12—H12	119.9
C6—C7—H7A	109.8	C11—C12—H12	119.9
N2—C7—H7B	109.8	C10—C9—C8	120.5 (3)
C6—C7—H7B	109.8	C10—C9—H9	119.8
H7A—C7—H7B	108.3	C8—C9—H9	119.8

supplementary materials

C1—C2—C3	120.1 (3)	C10—C11—C12	119.7 (4)
C1—C2—H2	119.9	C10—C11—H11	120.2
C3—C2—H2	119.9	C12—C11—H11	120.2
N1—C6—C7	109.5 (3)	C9—C10—C11	119.0 (3)
N1—C6—H6A	109.8	C9—C10—H10	120.5
C7—C6—H6A	109.8	C11—C10—H10	120.5
N1—C6—H6B	109.8	O4—I2—O6	102.12 (18)
C7—C6—H6B	109.8	O4—I2—O5	98.89 (14)
H6A—C6—H6B	108.2	O6—I2—O5	101.98 (14)
C1—N1—C5—C4	0.1 (6)	C6—C7—N2—C12	74.0 (4)
C6—N1—C5—C4	-179.0 (4)	C6—C7—N2—C8	-104.5 (4)
C5—N1—C1—C2	-0.9 (6)	C12—N2—C8—C9	-1.2 (6)
C6—N1—C1—C2	178.2 (4)	C7—N2—C8—C9	177.2 (3)
N1—C1—C2—C3	0.7 (6)	C8—N2—C12—C11	2.3 (6)
C5—N1—C6—C7	104.7 (4)	C7—N2—C12—C11	-176.1 (4)
C1—N1—C6—C7	-74.4 (4)	N2—C8—C9—C10	-0.2 (6)
N2—C7—C6—N1	173.7 (3)	N2—C12—C11—C10	-2.1 (7)
N1—C5—C4—C3	0.9 (6)	C8—C9—C10—C11	0.4 (6)
C1—C2—C3—C4	0.3 (6)	C12—C11—C10—C9	0.7 (7)
C5—C4—C3—C2	-1.1 (6)		

Hydrogen-bond geometry (\AA , $^\circ$)

<i>D</i> —H \cdots <i>A</i>	<i>D</i> —H	H \cdots <i>A</i>	<i>D</i> \cdots <i>A</i>	<i>D</i> —H \cdots <i>A</i>
C1—H1 \cdots O3 ⁱ	0.93	2.22	3.095 (5)	157
C3—H3 \cdots O2 ⁱⁱ	0.93	2.37	3.133 (5)	139
C5—H5 \cdots O1	0.93	2.56	2.888 (4)	101
C5—H5 \cdots O4 ⁱⁱⁱ	0.93	2.42	3.210 (5)	143
C6—H6B \cdots O4 ⁱ	0.97	2.37	3.230 (5)	148
C7—H7A \cdots O2	0.97	2.52	3.420 (4)	154
C7—H7B \cdots O1 ⁱ	0.97	2.40	3.311 (5)	156
C8—H8 \cdots O1 ⁱ	0.93	2.41	3.225 (5)	146
C9—H9 \cdots O1 ^{iv}	0.93	2.49	3.297 (4)	146
C10—H10 \cdots O6 ^v	0.93	2.18	3.051 (5)	156
C12—H12 \cdots O5 ⁱⁱⁱ	0.93	2.07	2.982 (5)	167

Symmetry codes: (i) $-x+3/2, y-1/2, -z+3/2$; (ii) $-x+3/2, y+1/2, -z+3/2$; (iii) $x+1, y, z$; (iv) $x, y-1, z$; (v) $x+1, y-1, z$.

Fig. 1

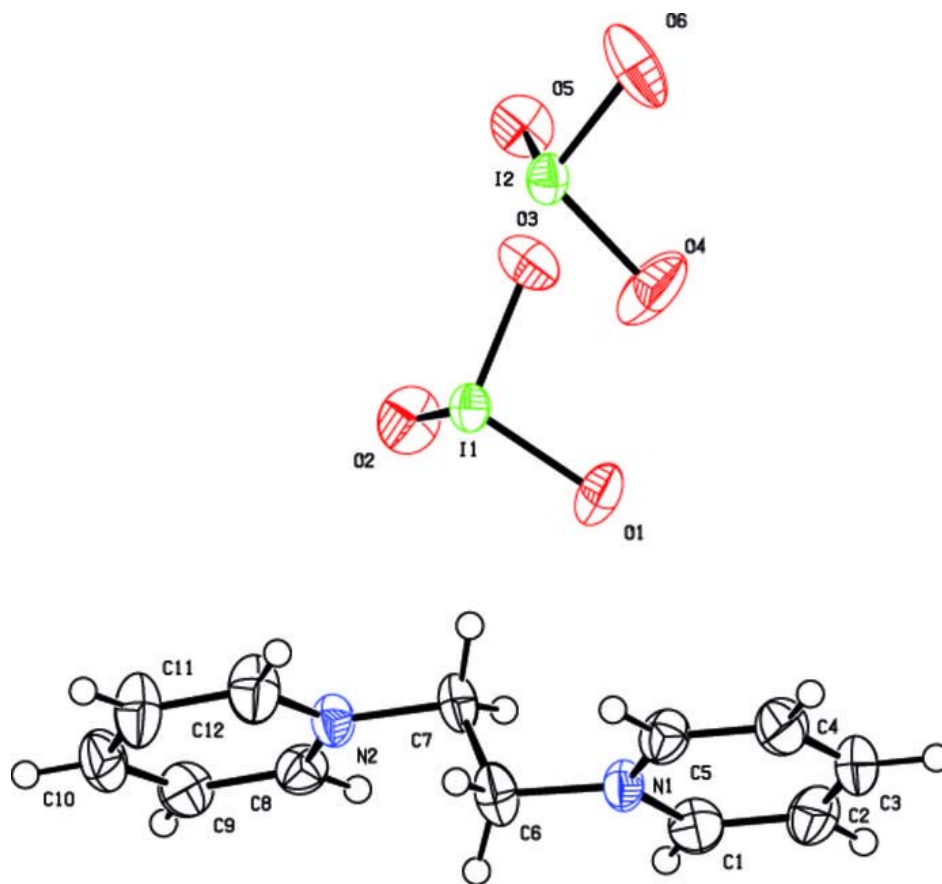


Fig. 2

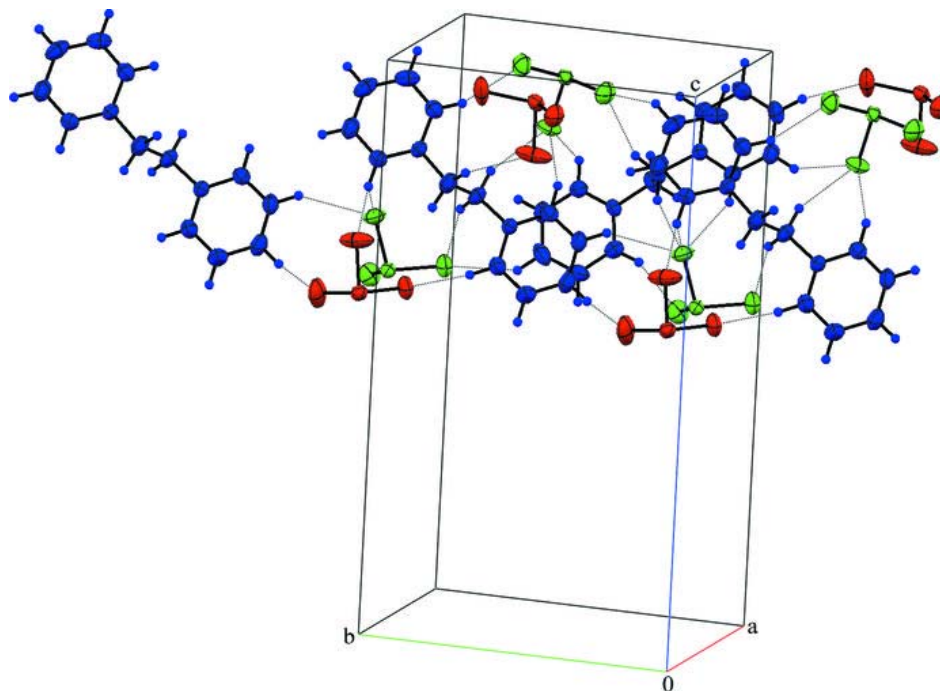


Fig. 3

